

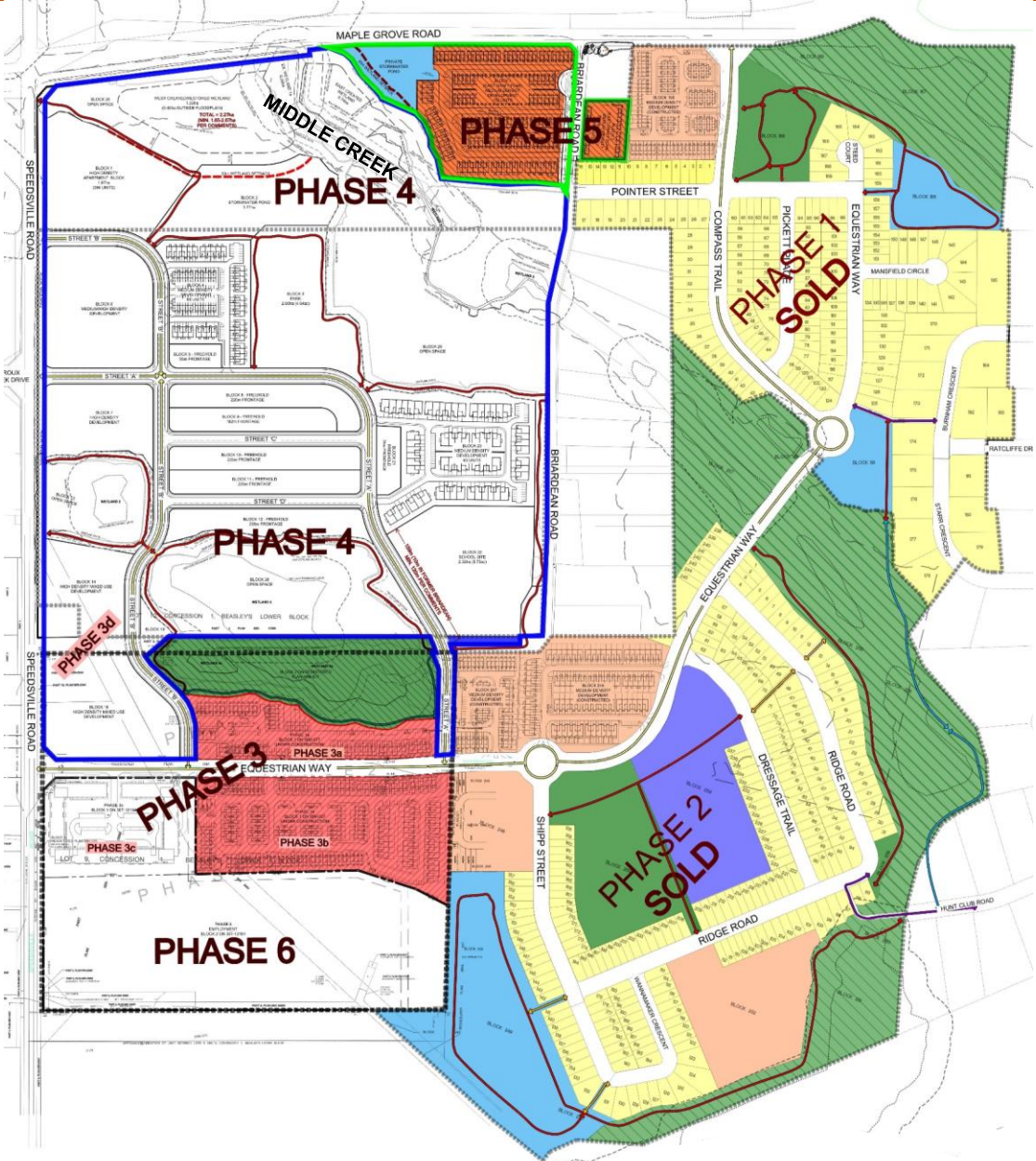
River Mill Development Corporation











river
mill
cambridge







River Mill Community – Built Phases



LAND USE

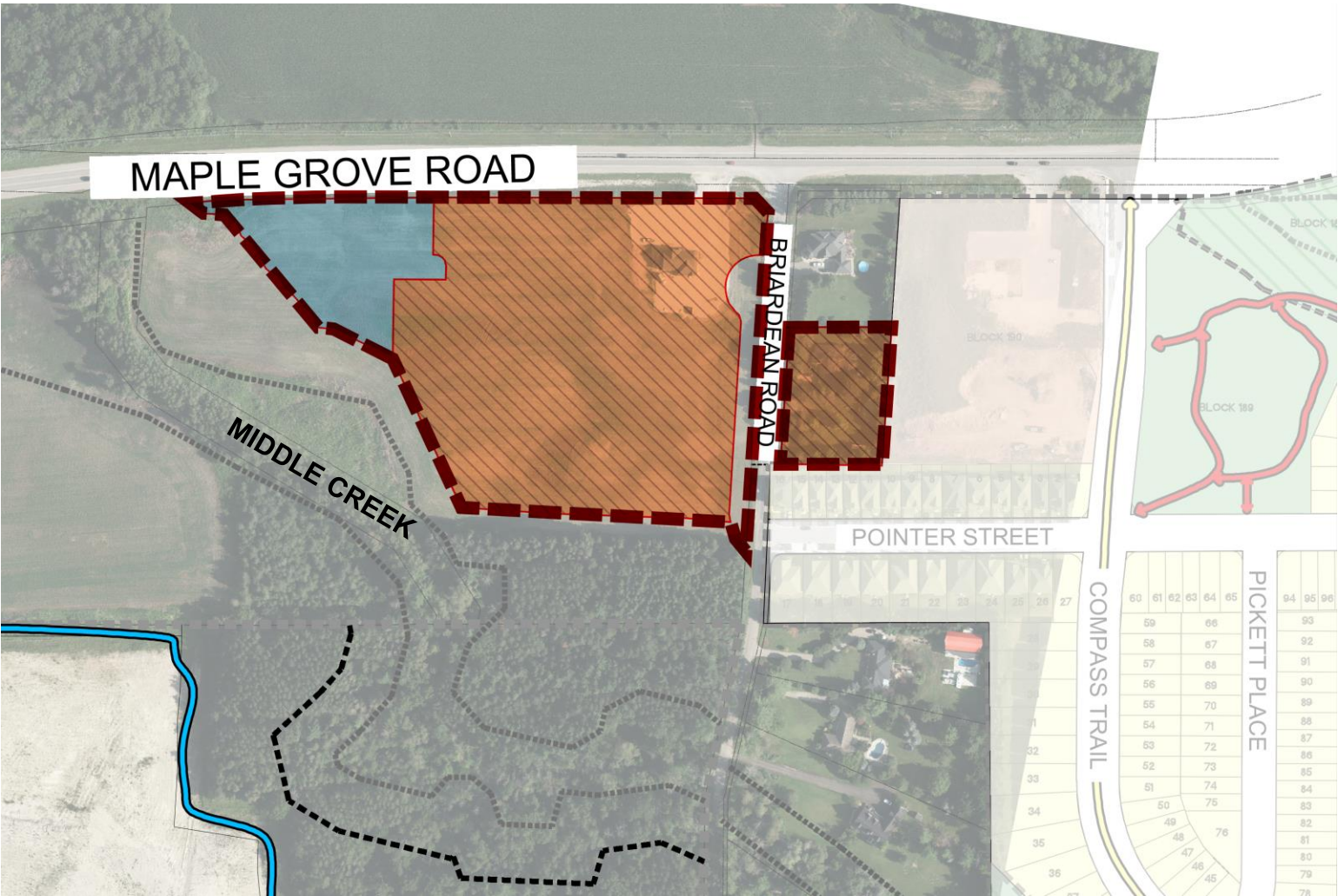
-  RIVER MILL COMMUNITY WEST (PHASE 4)
-  RIVER MILL COMMUNITY EAST (PHASE 5)
-  LOW/MEDIUM DENSITY FREEHOLD
-  MEDIUM DENSITY
-  MEDIUM/HIGH DENSITY
-  HIGH DENSITY
-  HIGH DENSITY MIXED USE
-  MIXED USE - PHASE 3

TRAILS

-  PRIMARY MULTI-USE TRAIL - 3M WIDE ASPHALT
-  SECONDARY TRAIL - 3.0M WIDE LIMESTONE
-  BIKE LANES
-  PHASE LINE (CURRENT DRAFT PLAN)



River Mill Community – Phase 5



LEGEND (LAND USE)

- PHASE 5 BOUNDARY
- LOW/MEDIUM DENSITY RESIDENTIAL
- STORMWATER MANAGEMENT

LEGEND (TRAILS)

- PRIMARY MULTI-USE TRAIL - 3M WIDE ASPHALT
- SECONDARY TRAIL - 3.0M WIDE LIMESTONE
- BIKE LANES



River Mill Community – Phase 5 Required Approvals

OFFICIAL PLAN AMENDMENT

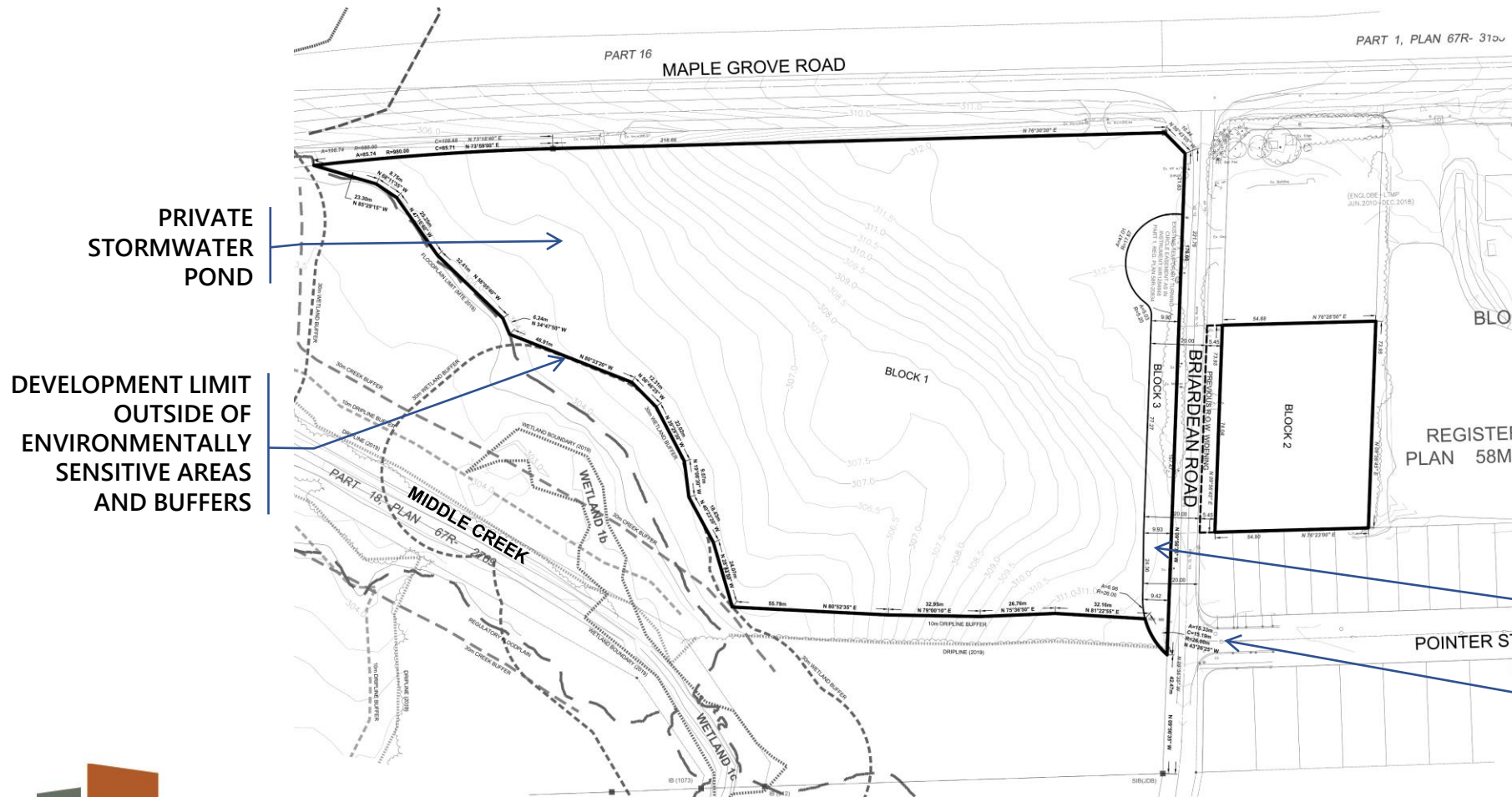
- To establish Low/Medium Residential with a density of 50 u/ha

ZONING BYLAW AMENDMENT

- To create building regulations

DRAFT PLAN OF SUBDIVISION

- To create a Registered Block necessary to create Condo ownership



River Mill Community – Phase 5 Concept



River Mill Community



Community Portal: tjohnsconsulting.com/project/river-mill-east-phase-5



River Mill Community



- Provides intensification on vacant/underutilized lands.
- Provides an increase in housing options to meet the diverse housing needs.
- Contributes to the creation of a complete community.



Community Portal: tjohnsconsulting.com/project/river-mill-east-phase-5