

Our Impact

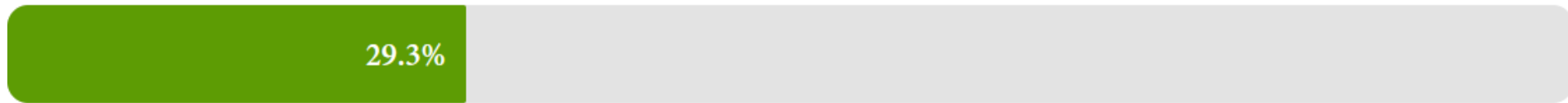
2021-2022



We help you live sustainably
reepgreen.ca



10,000 Meaningful Actions Between 2020 and 2030



2,934
Meaningful Actions

9,850
Supportive Actions

Home Energy and Water Efficiency



465

Energy Evaluations

140

Energy Efficiency Upgrades

216

Water-Efficient Fixture Upgrades

Tackling the Challenge of Deep Energy Retrofits



Healthy Yards & Neighbourhoods



264

Trees planted

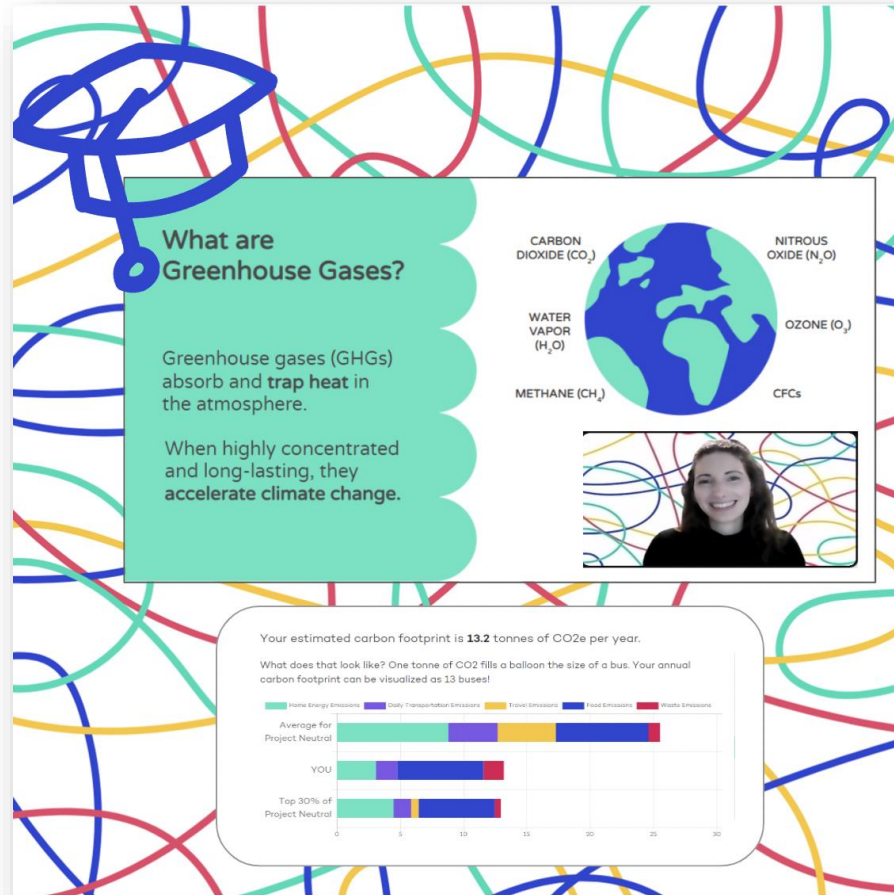
59

Healthy Yards Visits

3,330

Bloom{in} Box Plants Sold

Community Engagement



What are Greenhouse Gases?

Greenhouse gases (GHGs) absorb and **trap heat** in the atmosphere.

When highly concentrated and long-lasting, they **accelerate climate change**.

CARBON DIOXIDE (CO₂)
NITROUS OXIDE (N₂O)
WATER VAPOR (H₂O)
OZONE (O₃)
METHANE (CH₄)
CFCs

Your estimated carbon footprint is **13.2 tonnes** of CO₂e per year.

What does that look like? One tonne of CO₂ fills a balloon the size of a bus. Your annual carbon footprint can be visualized as 13 buses!

Category	Home Energy Emissions	Only Transportation Emissions	Travel Emissions	Food Emissions	Waste Emissions	Total
Average for Project Neutral	~5	~5	~3	~4	~1	~18
YOU	~2	~5	~1	~3	~2	13.2
Top 30% of Project Neutral	~2	~2	~1	~3	~1	~9

2,771
Webinar Attendees

149
Zero Waste Challengers

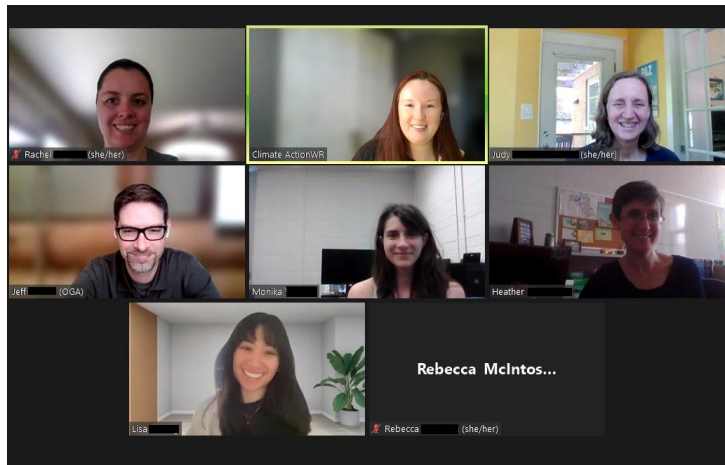
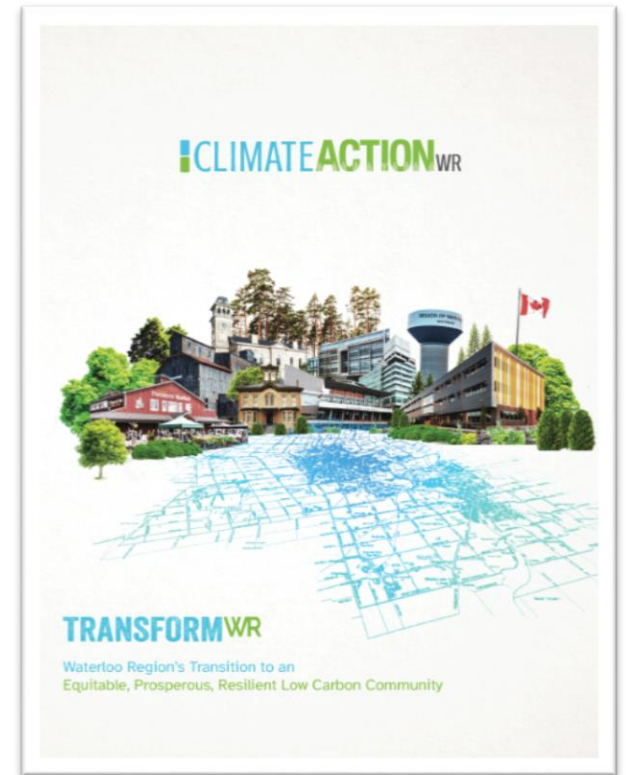
1,378
Students Engaged

sustainable
WATERLOO ▸ REGION

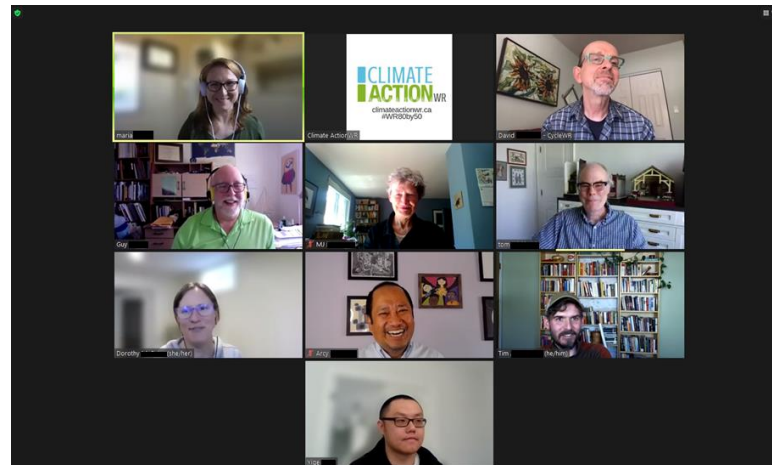
**Reep
Green
Solutions**



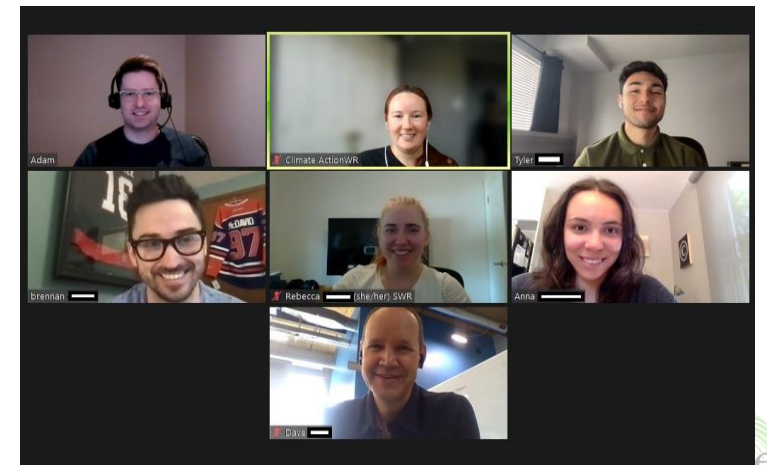
**CLIMATE
ACTION**WR



Residential

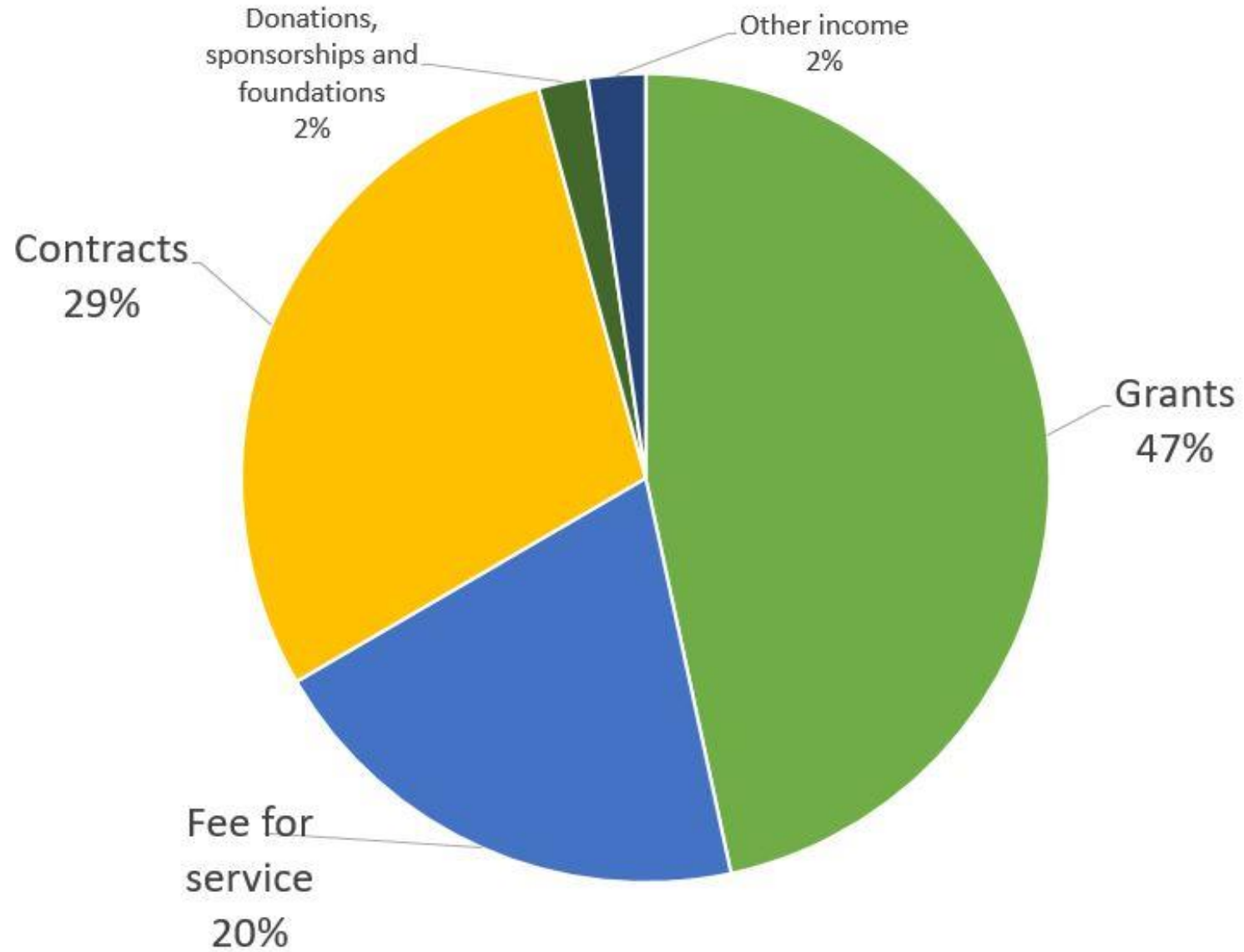


Transportation



Workplace

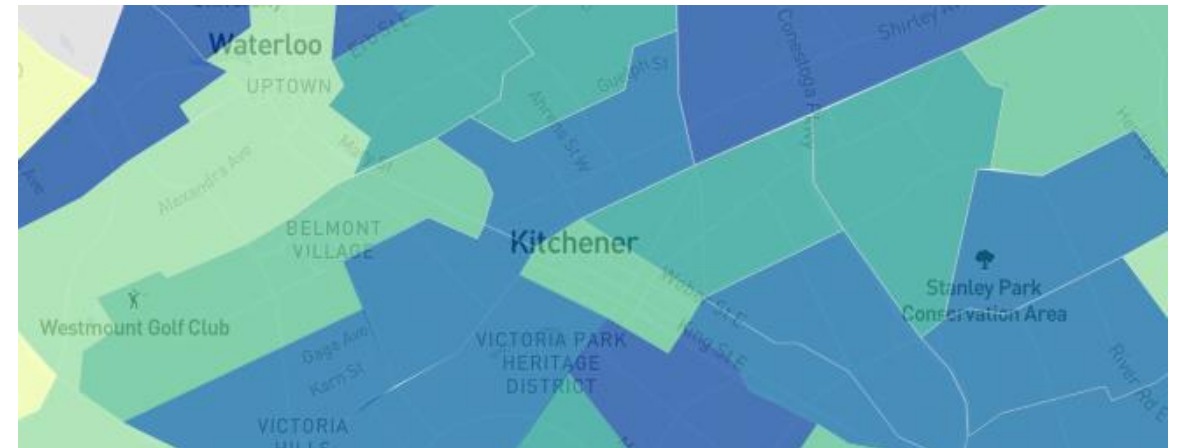
Financial Summary - Revenue



Looking Ahead



Successful funding application for a tree nursery



Continuing our work on energy poverty in Waterloo Region

Thank You to our Core Funders

