

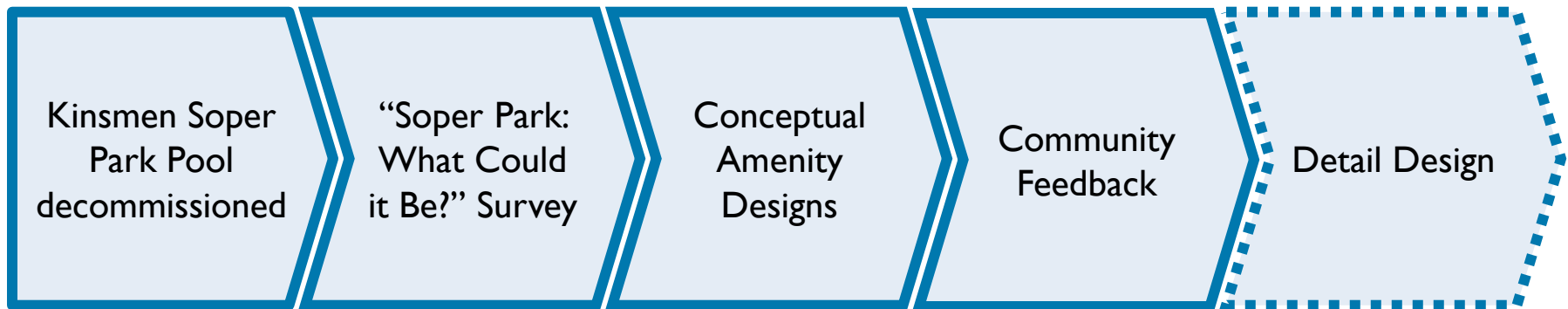


# Soper Park Amenity Conceptual Design

February 28, 2023

# Background

- Kinsmen Soper Park Pool was closed in 2021 (Report 20-236 [CRE]).
- "Soper Park: What Could it Be?" public survey (2021) gathered initial public feedback. The Engage Cambridge survey collected 492-page views, and the survey and ideas page received 168 responses.
- The survey results helped inform the scope and options being reviewed as part of the current amenity design project
- In November 2022, a hybrid engagement process was undertaken to collect further feedback from the community on three (3) conceptual designs developed.



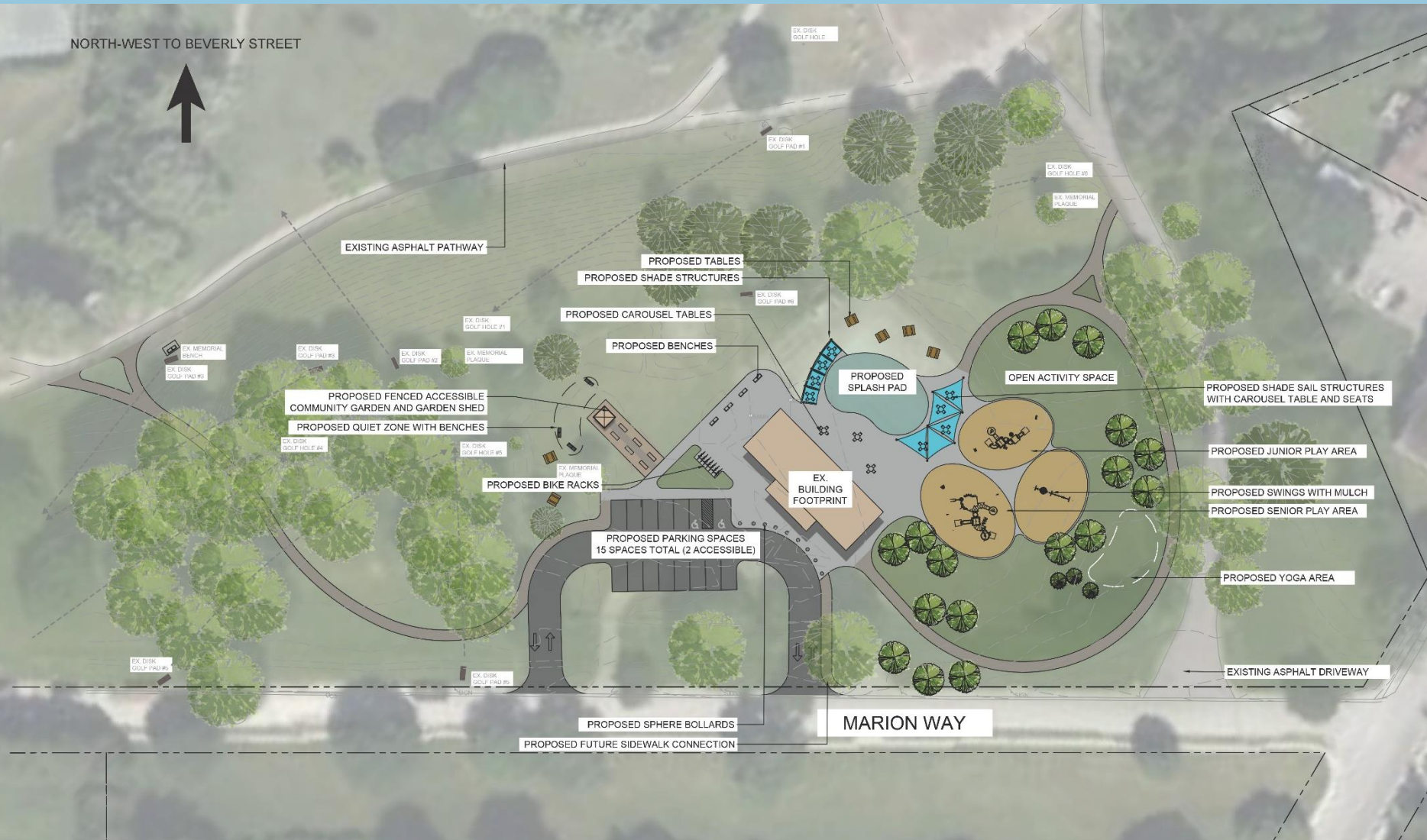
**Site Plan Labels:**

- NORTH-WEST TO BEVERLY STREET
- EXISTING ASPHALT PATHWAY
- PROPOSED SWINGS WITH MULCH
- PROPOSED PLAYGROUND
- PROPOSED PICNIC TABLES
- PROPOSED BIKE RACK
- EX. BUILDING FOOTPRINT
- PROPOSED SHADE SAIL STRUCTURES WITH CAROUSEL TABLE AND SEATS
- OPEN ACTIVITY SPACE
- PROPOSED SPLASH PAD
- PROPOSED CAROUSEL TABLES
- PROPOSED YOGA AREA
- EXISTING ASPHALT DRIVEWAY
- PROPOSED ACCESSIBLE FENCED COMMUNITY GARDEN AND GARDEN SHED
- PROPOSED PARKING SPACES 17 SPACES TOTAL (2 ACCESSIBLE)
- MARION WAY
- PROPOSED SPHERE BOLLARDS
- PROPOSED FUTURE SIDEWALK CONNECTION
- EX. DISK GOLF HOLE #1
- EX. DISK GOLF HOLE #2
- EX. DISK GOLF HOLE #3
- EX. DISK GOLF HOLE #4
- EX. DISK GOLF HOLE #5
- EX. DISK GOLF HOLE #6
- EX. DISK GOLF HOLE #7
- EX. DISK GOLF HOLE #8
- EX. DISK GOLF HOLE #9
- EX. DISK GOLF HOLE #10
- EX. DISK GOLF HOLE #11
- EX. DISK GOLF HOLE #12
- EX. DISK GOLF HOLE #13
- EX. DISK GOLF HOLE #14
- EX. DISK GOLF HOLE #15
- EX. DISK GOLF HOLE #16
- EX. DISK GOLF HOLE #17
- EX. DISK GOLF HOLE #18
- EX. DISK GOLF HOLE #19
- EX. DISK GOLF HOLE #20
- EX. DISK GOLF HOLE #21
- EX. DISK GOLF HOLE #22
- EX. DISK GOLF HOLE #23
- EX. DISK GOLF HOLE #24
- EX. DISK GOLF HOLE #25
- EX. DISK GOLF HOLE #26
- EX. DISK GOLF HOLE #27
- EX. DISK GOLF HOLE #28
- EX. DISK GOLF HOLE #29
- EX. DISK GOLF HOLE #30
- EX. DISK GOLF HOLE #31
- EX. DISK GOLF HOLE #32
- EX. DISK GOLF HOLE #33
- EX. DISK GOLF HOLE #34
- EX. DISK GOLF HOLE #35
- EX. DISK GOLF HOLE #36
- EX. DISK GOLF HOLE #37
- EX. DISK GOLF HOLE #38
- EX. DISK GOLF HOLE #39
- EX. DISK GOLF HOLE #40
- EX. DISK GOLF HOLE #41
- EX. DISK GOLF HOLE #42
- EX. DISK GOLF HOLE #43
- EX. DISK GOLF HOLE #44
- EX. DISK GOLF HOLE #45
- EX. DISK GOLF HOLE #46
- EX. DISK GOLF HOLE #47
- EX. DISK GOLF HOLE #48
- EX. DISK GOLF HOLE #49
- EX. DISK GOLF HOLE #50
- EX. DISK GOLF HOLE #51
- EX. DISK GOLF HOLE #52
- EX. DISK GOLF HOLE #53
- EX. DISK GOLF HOLE #54
- EX. DISK GOLF HOLE #55
- EX. DISK GOLF HOLE #56
- EX. DISK GOLF HOLE #57
- EX. DISK GOLF HOLE #58
- EX. DISK GOLF HOLE #59
- EX. DISK GOLF HOLE #60
- EX. DISK GOLF HOLE #61
- EX. DISK GOLF HOLE #62
- EX. DISK GOLF HOLE #63
- EX. DISK GOLF HOLE #64
- EX. DISK GOLF HOLE #65
- EX. DISK GOLF HOLE #66
- EX. DISK GOLF HOLE #67
- EX. DISK GOLF HOLE #68
- EX. DISK GOLF HOLE #69
- EX. DISK GOLF HOLE #70
- EX. DISK GOLF HOLE #71
- EX. DISK GOLF HOLE #72
- EX. DISK GOLF HOLE #73
- EX. DISK GOLF HOLE #74
- EX. DISK GOLF HOLE #75
- EX. DISK GOLF HOLE #76
- EX. DISK GOLF HOLE #77
- EX. DISK GOLF HOLE #78
- EX. DISK GOLF HOLE #79
- EX. DISK GOLF HOLE #80
- EX. DISK GOLF HOLE #81
- EX. DISK GOLF HOLE #82
- EX. DISK GOLF HOLE #83
- EX. DISK GOLF HOLE #84
- EX. DISK GOLF HOLE #85
- EX. DISK GOLF HOLE #86
- EX. DISK GOLF HOLE #87
- EX. DISK GOLF HOLE #88
- EX. DISK GOLF HOLE #89
- EX. DISK GOLF HOLE #90
- EX. DISK GOLF HOLE #91
- EX. DISK GOLF HOLE #92
- EX. DISK GOLF HOLE #93
- EX. DISK GOLF HOLE #94
- EX. DISK GOLF HOLE #95
- EX. DISK GOLF HOLE #96
- EX. DISK GOLF HOLE #97
- EX. DISK GOLF HOLE #98
- EX. DISK GOLF HOLE #99
- EX. DISK GOLF HOLE #100

Conceptual Design Option I showing the planned amenities proposed.



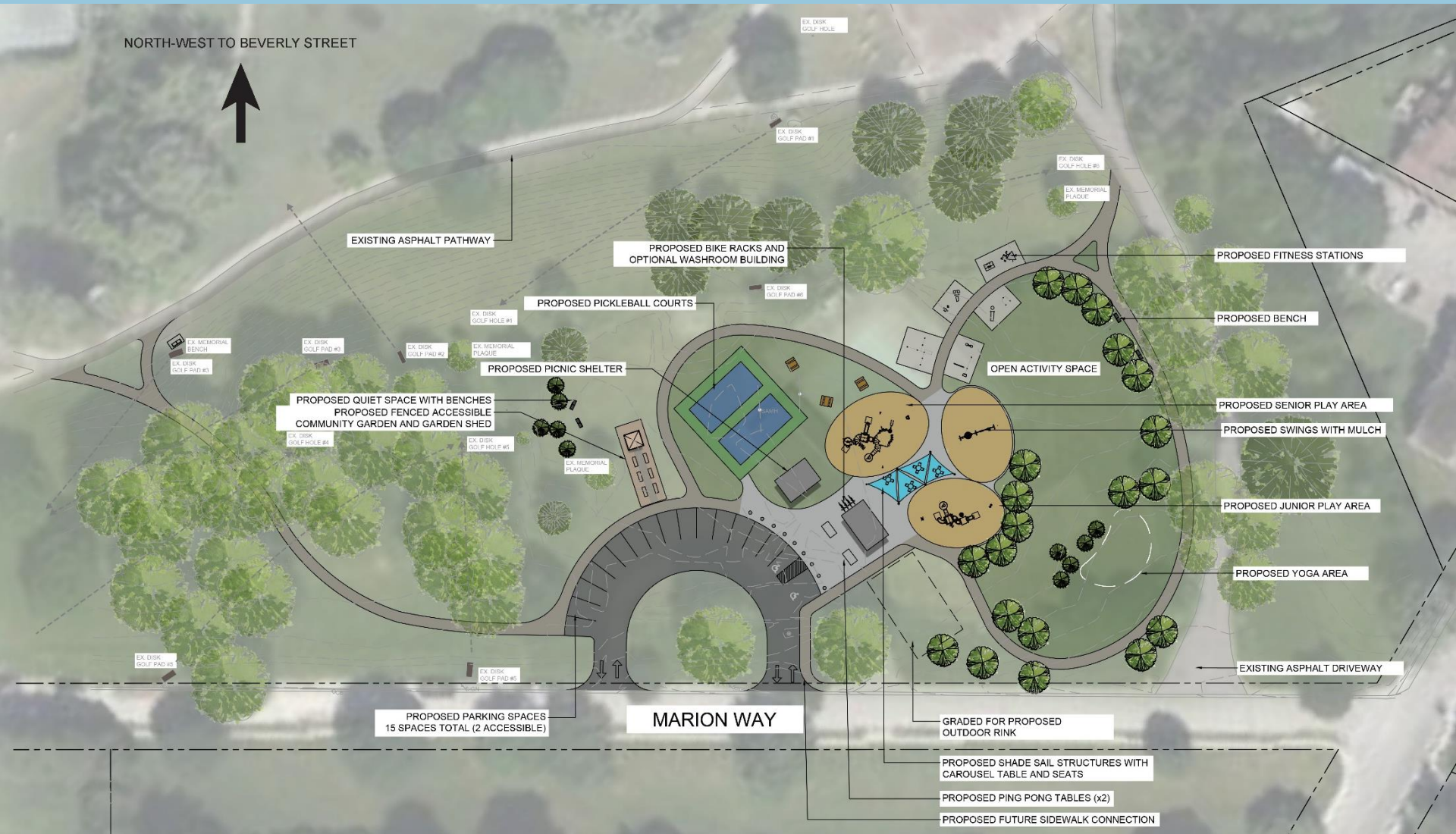
# Conceptual Design Option 2



Conceptual Design Option 2 showing the planned amenities proposed.

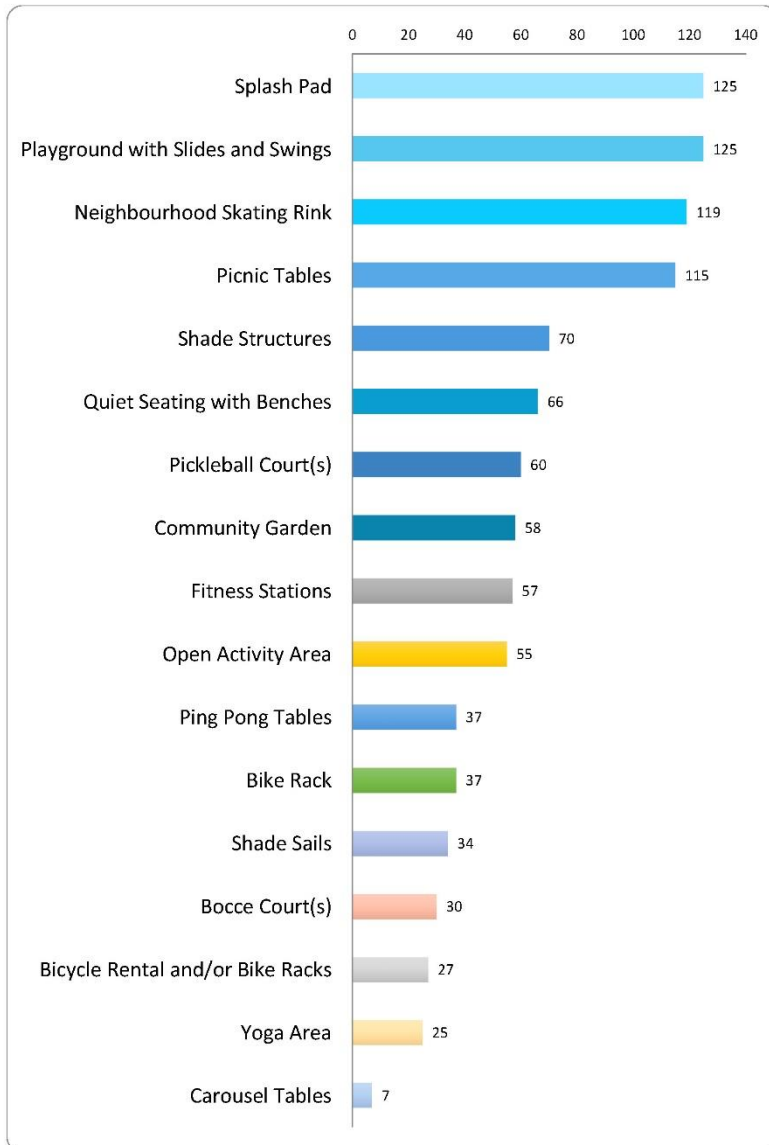


# Conceptual Design Option 3



Conceptual Design Option 3 showing the planned amenities proposed.

# Public Engagement – November 2022



- Engage Cambridge survey – 1,255 page views and 261 viewers submitted a response
- In-Person PIC – 43 attendees with 6 written comments/surveys received
- Community feedback revealed the highest interest in the following amenities:
  - Splash Feature (125 votes);
  - Playground with Slides and Swings (125 votes);
  - Neighbourhood Skating Rink (119 votes);
  - Picnic Tables (115 votes);
  - Shade Structures (70 votes);
  - Quiet Seating with Benches (66 votes);
  - Pickleball Court(s) (60 votes); and
  - Community Garden (58 votes)

# Building Considerations



- Demolition of the existing building delayed until selection of preferred amenity.
- Splash pad likely requires consideration for a washroom/change room
- Four (4) high level estimates prepared to compare alternatives:
  1. Full renovation of the existing building
  2. Partial demolition and partial renovation
  3. Full demolition of the existing building and new building with minimum footprint
  4. Full demolition, with no re-build
- Staff recommend that Council endorse Building Option 3 to support a splash feature

# Summary and Next Steps

- Soper Park Conceptual Design Option 1 best aligns with community feedback and is being recommended
- Building Option 3 is being recommended to support any concept with a splash feature (full demolition of existing building and re-building smaller washroom/change room facility). Additional funding for detailed design of the building is being requested.
- Following Council Endorsement and selection of the preferred amenity conceptual design option and building option, the project will proceed to detailed design.





Questions?  
Thank you.

# CONTACT INFORMATION

Name: Claire McLoughlin

Title: Landscape Architect

Phone: 519-623-1340 ext. 4204

Email: [mcloughlinc@cambridge.ca](mailto:mcloughlinc@cambridge.ca)



Inclusiveness • Respect • Integrity • Service



[www.cambridge.ca](http://www.cambridge.ca)