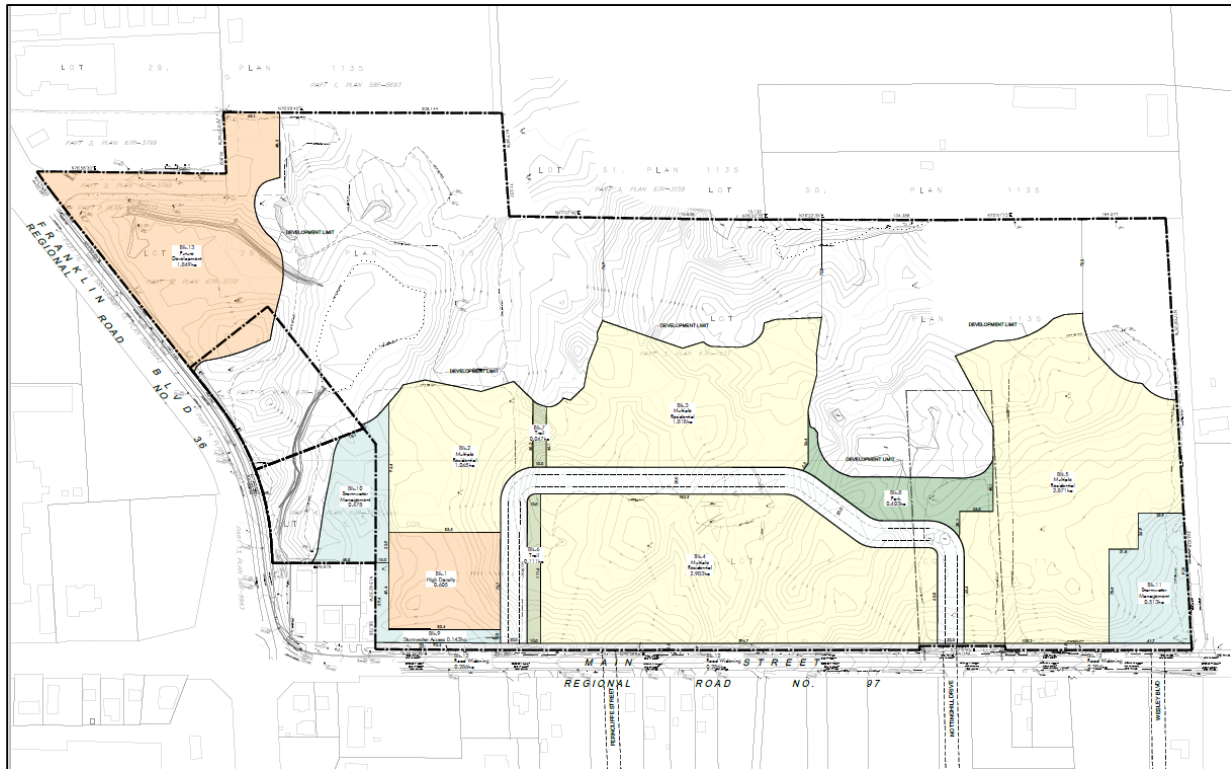


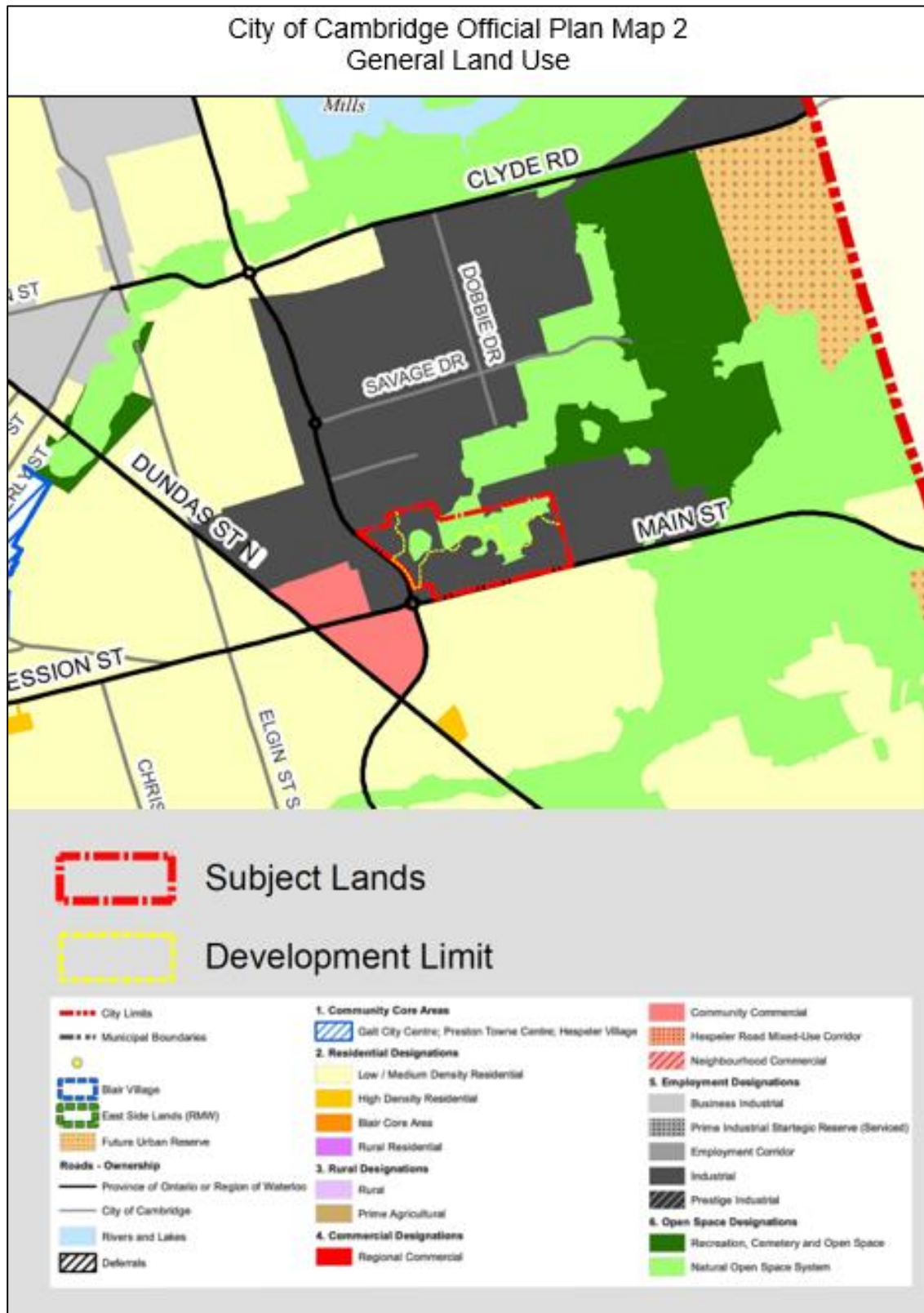
Appendix A – Proposed Plan of Subdivision



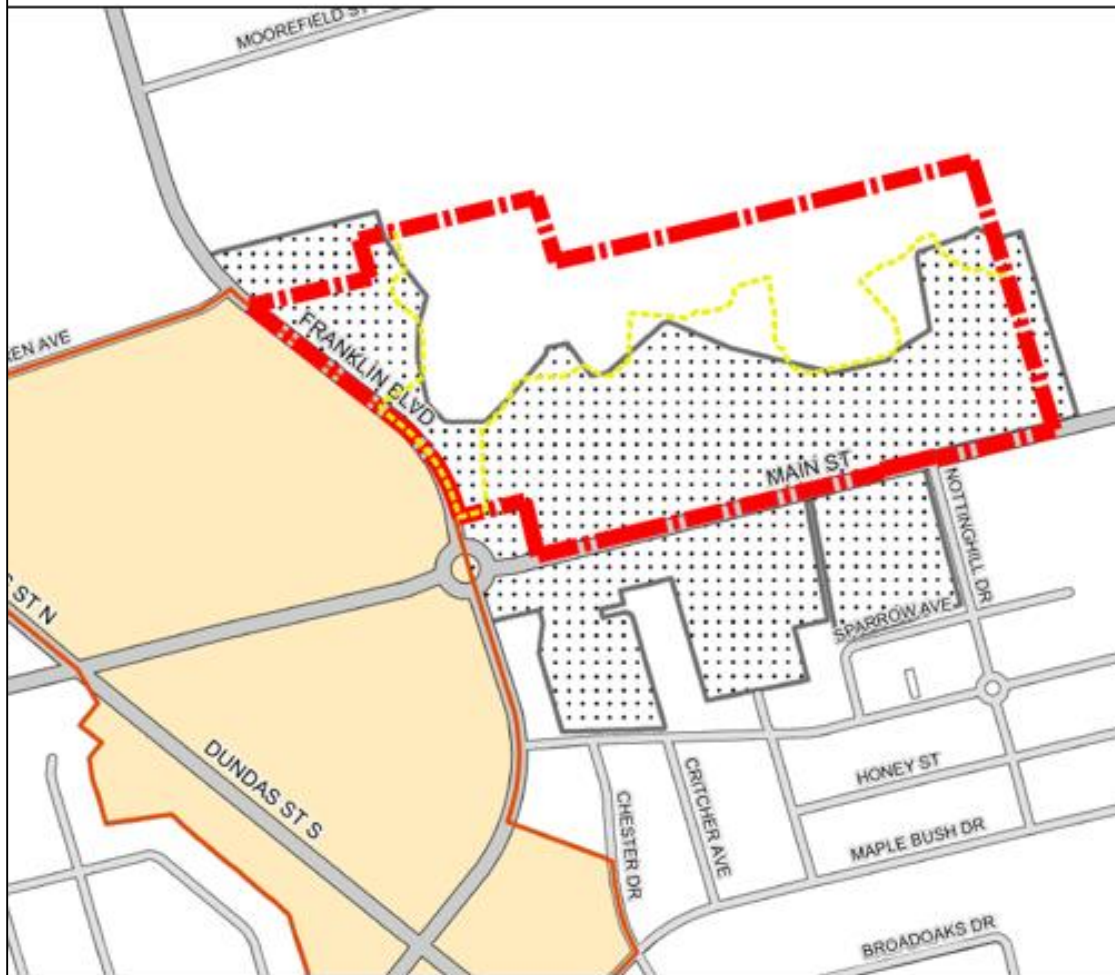
Proposed Draft Plan of Subdivision with rendering overlay:



Appendix B – Existing Official Plan Map



City of Cambridge Official Plan Official
Plan Figure 3 - Community Node Main St and Dundas St S



LEGEND



Subject Lands



Development Limit

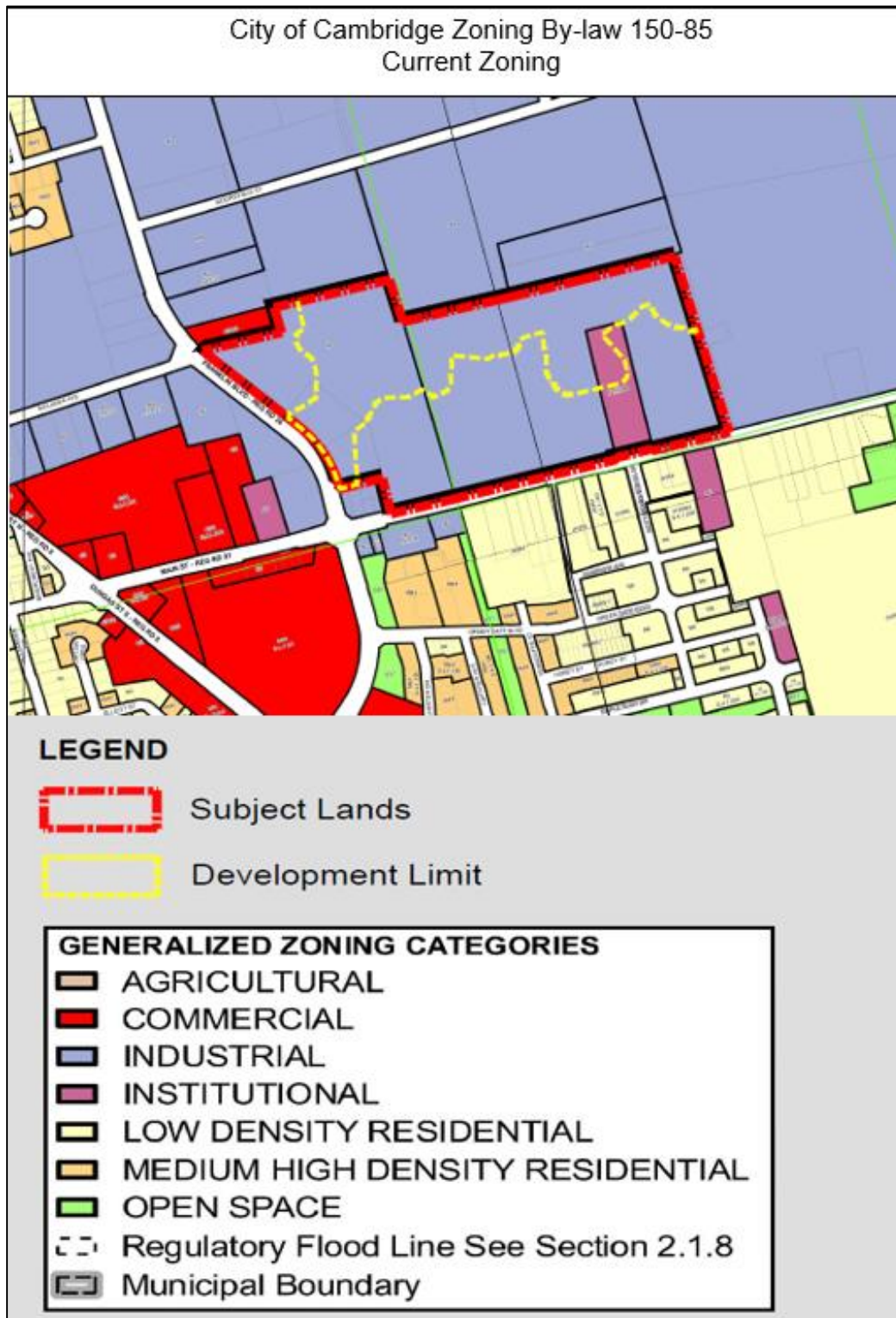


Node Boundary



Future Study Area for inclusion in node boundary

Appendix C – Existing Zoning Map



Appendix D – Internal/External Consultation & List of Supporting Studies

This application has been circulated to the departments and agencies listed below. Their comments will be included in a future staff report to Council for consideration.

- City of Cambridge Engineering Division;
- City of Cambridge Transportation Engineering Division;
- City of Cambridge Recreation and Cultural Division;
- City of Cambridge Fire Department;
- City of Cambridge Building Services Division;
- City of Cambridge Accessibility Coordinator;
- City of Cambridge Economic Development Division;
- City of Cambridge Senior Planner Reurbanization;
- Regional Municipality of Waterloo;
- Grand River Conservation Authority;
- Energy+ Inc;
- Waterloo Region District School Board; and
- Waterloo Catholic District School Board

List of Supporting Studies:

- Draft Plan of Subdivision
- Planning Justification Report
- Urban Design Brief
- Interim Phase One Environmental Site Assessment Report
- Interim Phase Two Environmental Site Assessment Report
- Source Water Protection Contamination Study
- Stage 1-2 Archaeological Assessment
- Functional Servicing Report
- Noise Impact Study
- Geotechnical Investigation
- Hydrogeological Assessment
- Environmental Impact Study
- Phase I Environmental Site Assessment
- Phase II Environmental Site Assessment
- Transportation Impact Study
- Section 59 Notice