

**To:** **COUNCIL**

**Meeting Date:** **01/18/2022**

**Subject:** **Beaverdale Road Speed Limit Review**

**Submitted By:** **Hardy Bromberg, Deputy City Manager, Community Development**

**Prepared By:** **Hardy Bromberg, Deputy City Manager, Community Development**

**Report No.:** **22-009(CD)**

**File No.:** **C1101**

---

## Recommendations

THAT Report 22-009 (CD) regarding Beaverdale Road Speed Limit Review be received;

AND THAT the 80 km/h speed limit on Beaverdale Road be reduced to 60 km/h from Mohawk Road to 650m south of Kossuth Road;

AND THAT the 80 km/h speed limit on Beaverdale Road be reduced to 50 km/h from Kossuth Road to a location 650 metres south of Kossuth Road;

AND THAT the existing 50 km/h speed limit on Beaverdale Road from Maple Grove Road to Mohawk Road remain;

AND FURTHER THAT the by-law included as Appendix A to Report 21-009 (CD) to amend By-law 187-06 be passed.

---

## Executive Summary

### Purpose

The purpose of this report is to recommend adjustments to the speed limits along Beaverdale Road from Maple Grove Road to Kossuth Road.

### Key Findings

- Currently the speed limit along Beaverdale Road from Kossuth Road to Mohawk Road is 80 km/h and from Mohawk Road to Maple Grove Road the speed limit is 50 km/h.

- A re-evaluation of the speed limit has been completed for the entire length of Beaverdale Road from Kossuth Road to Maple Grove Road using the Transportation Association of Canada (TAC) guidelines which recommends a speed limit of 60 km/h.
- It is staff's recommendation, as shown in the below photo to:
  - A) adjust the speed along Beaverdale Road from 80 km/h to 60 km/h;
  - B) maintain the existing speed limit of 50 km/h between Mohawk Road and Maple Grove; and
  - C) reduce the speed limit to 50 km/h on the last 650 metre section of Beaverdale Road as it approaches Kossuth Road from the south.



## Financial Implications

Costs are estimated to be \$1,200 for the required traffic sign revisions and will be funded through the 2022 Transportation Engineering Operating Budget



## Background

Beaverdale Road from Kossuth Road to Mohawk Road currently has a speed limit of 80 km/h and from Mohawk Road to Maple Grove Road the speed limit is 50km/h as shown in the below photo.



Prior to 1999 Beaverdale Road was under the jurisdiction of the Region of Waterloo and in 1992 a petition was received by the Region requesting a speed limit reduction from 60 km/h to 50 km/h starting at the Speed River bridge up to Fisher Mills Road. As a result of that request, a review was completed by Region of Waterloo staff with a follow up report recommending that the existing 60km/h speed limit between the Speed River

bridge and Mohawk Road remain. However, through a Region of Waterloo Council resolution, the speed limit was reduced to 50 km/h from the south limits of the Speed River bridge to Mohawk Road.

In 2009, the Transportation Association of Canada (TAC) published a document entitled “Canadian Guidelines for Establishing Posted Speed Limits”. This document was developed to provide guidance and to enhance consistency in the evaluation of posted speed limits. The intent of the guidelines is to provide engineers and traffic practitioners with an evaluation tool to assess appropriate posted speed limits based primarily on the classification, function and physical characteristics of a roadway. As the road authority, it is Council’s jurisdiction to set the speed limits, while staff use the guidelines to help inform recommendations.

These guidelines were used by City staff in the 2011 assessment of the posted speed limit on Beaverdale Road from Kossuth Road to Mohawk Road. The review was presented to Council through report TPW-01/11, Beaverdale Road Speed Limit Review with no change made to the posted speed limit, as per the recommendation.

Concerns related to speeding on Beaverdale Road between Maple Grove Road and Kossuth Road continue to be raised, particularly at the south end in the existing 50 km/h speed limit zone where three (3) concerns from area residents were received in 2020 and 2021. One resident concern was received in 2021 regarding speeding at the north end of Beaverdale Road which requested that the speed limit also be reduced to 50 km/h.

As part of the City’s 2021 Speed Management Program Action Plan, seasonal traffic calming signs were installed on Beaverdale Road within the existing 50 km/h speed limit zone.

---

## Analysis

### Strategic Alignment

PEOPLE To actively engage, inform and create opportunities for people to participate in community building – making Cambridge a better place to live, work, play and learn for all.

Goal #1 - Community Wellbeing

Objective 1.1 Work with partners to create a safe, inclusive and accessible city.

The recommendations of this report are intended to address speeding concerns on Beaverdale Road while also providing a safe and efficient transportation network for all users.

---

## Comments

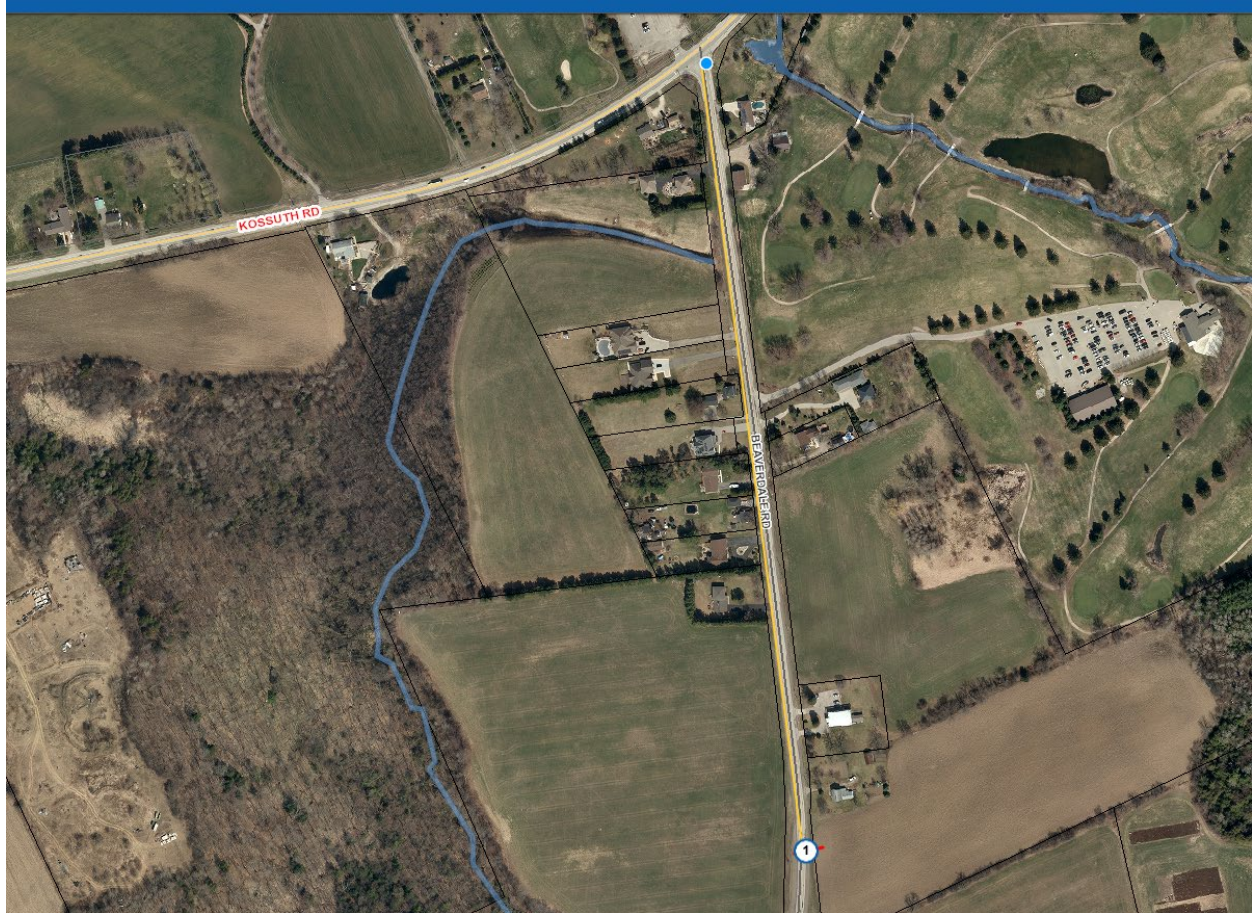
As part of the City's Transportation Master Plan (TMP) endorsed by Council in 2019, a review and update of the City's roadway classifications was conducted to better define specific functions and characteristics for each road class. The main outcome of this update was the differentiation of collector roads as either major collectors or minor collectors. Prior to this update, Beaverdale Road was classified as a collector with no differentiation between major or minor. However, through the 2019 TMP, Beaverdale Road is now classified as a minor collector road.

With continued speeding concerns on Beaverdale Road a re-evaluation of the speed limit was completed for the entire length of Beaverdale Road from Kossuth Road to Maple Grove Road. Using the updated road classification from the 2019 TMP and the Transportation Association of Canada (TAC) guidelines, the results of the assessment have changed from 2011, such that the posted speed limit for Beaverdale Road from Kossuth Road to Maple Grove Road would be 60 km/h.

In recognition of the previous road authority's decision (Region of Waterloo Council 1992 resolution) and the speed limit assessments completed, it is recommended that the existing posted speed of 50 km/h from Mohawk Road to Maple Grove Road remain unchanged. Maintaining the existing 50 km/h speed limit reduces potential concerns that could be raised from area residents within the existing 50 km/h speed limit zone at the south end of Beaverdale if the speed limit were to be increased to 60 km/h.

There are 16 driveways along the 650 meter yellow highlighted section of Beaverdale Road as shown on the aerial photo below, which is similar to the section between Mohawk Road to Maple Grove Road. As such, it is also recommended to reduce the speed along this section to 50 km/h, which will satisfy the complaint from the resident along this section of roadway and aligns with the similar suggested speed on the south end.





In addition, it is recommended to lower the speed limit from 80 km/h to 60 km/h along the remaining section of Beaverdale Road in accordance with TAC guidelines.

As the Road Authority, Council has the ability to set the speed limit along Beaverdale Road. Options for Council's consideration include:

- a) Maintain the existing speed limits;
- b) Adjust those sections of Beaverdale Road which are currently at 80 km/h to 60 km/h, and maintain the existing 50 km/h section;
- c) Adjust the speed limits to the TAC guidelines, which would be 60 km/h along the entire length of Beaverdale Road between Maple Grove Road and Kossuth Road; or
- d) Adjust the speed limits as per the recommendation.

---

## Existing Policy/By-Law

The "Canadian Guidelines for Establishing Posted Speed Limits", published by the Transportation Association of Canada provides guidance for the assessment of posted speed limits and was considered for the recommendations of this report.

Traffic and Parking By-law 187-06 Schedule 18 - Rates of Speed, identifies the rate of speed for all City roadways with a speed limit other than 50 km/h. To support the recommendation of this Report a By-law amendment is required (See Appendix A).

---

## Financial Impact

The required traffic sign revisions will be funded through the 2022 Transportation Engineering Operating Budget.

---

## Public Input

All property owners along Beaverdale Road between Kossuth Road and Mohawk Road were notified regarding the recommendations of this report via mailed letter on the week of January 4, 2022.

The letter also included all of the relevant information regarding how to access a copy of this report, the date and time of this Special Council meeting and how to submit comments or register as a delegation.

This report has also been posted publicly as part of the report process.

---

## Internal/External Consultation

There was no internal/external consultation undertaken.

---

## Conclusion

Based on the Transportation Association of Canada (TAC) “Canadian Guidelines for Establishing Posted Speed Limits”, recent resident concerns and previous review of the speed limit on Beaverdale Road in 1992 and 2011, it is recommended that the speed limit on Beaverdale from Kossuth Road to Maple Grove Road be reduced from 80 km/h to 60 km/h while those sections approaching both intersections of Kossuth and Maple Grove Road have a posted speed limit 50 km/h.

This recommendation aligns with the City’s Strategic Plan as it addresses resident concerns at both the south and north end of Beaverdale Road while creating a safe, inclusive and accessible City.

---

## Signature

### Division Approval

N/A

Reviewed by the CFO

Reviewed by Legal Services

## Departmental Approval

**Name:** Hardy Bromberg

**Title:** Deputy City Manager, Community Development

## City Manager Approval

Handwritten signature of Hardy Bromberg in black ink.

**Name:** Hardy Bromberg

**Title:** Acting City Manager

---

## Attachments

1. Appendix A – Traffic and Parking By-law Amendment





BY-LAW NO. XXX-XX

of the

CORPORATION OF THE CITY OF CAMBRIDGE

Being a by-law of the Corporation of the City of Cambridge to amend By-law 187-06 being a By-law for the regulation of Traffic and Parking.

**Beaverdale Road**

**WHEREAS** the Council of the Corporation of the City of Cambridge passed By-law No. 187-06 on the 18th day of September, 2006.

**AND WHEREAS** the Municipal Act, 2001, S.O. 2001, c.25, Section 11(2), authorizes the passing of by-laws regulating traffic and parking on highways;

**AND WHEREAS** it is deemed expedient to amend By-law No. 187-06.

**NOW THEREFORE BE IT RESOLVED THAT** the Corporation of the City of Cambridge enacts as follows:

1. THAT Schedule 18, "Rates of Speed", Part XIV of By-law No. 187-06 is hereby amended by **removing** the following:

HIGHWAY	FROM	TO	MAXIMUM SPEED
Beaverdale Road	Regional Road 31 (Kossuth Road)	Mohawk Road	80 km/h

2. THAT Schedule 18, "Rates of Speed", Part XIV of By-law No. 187-06 is hereby amended by **adding** the following:

HIGHWAY	FROM	TO	MAXIMUM SPEED
Beaverdale Road	Regional Road 31 (Kossuth Road)	650 metres south thereof	50 km/h
Beaverdale Road	650 metres south of Regional Road 31 (Kossuth Road)	Mohawk Road	60 km/h

3. THAT this by-law shall come into full force and effect upon the final passing thereof.

ENACTED AND PASSED THIS      TH DAY OF JANUARY, 2022, A.D.

---

MAYOR

---

CLERK