

THE CORPORATION OF THE CITY OF CAMBRIDGE

BY-LAW 26-015

A By-law to Designate the Property known as 8 Crescent Place, as being of Cultural and Heritage Value or Interest under Part IV of the *Ontario Heritage Act*.

WHEREAS section 29 of the *Ontario Heritage Act*, R.S.O. 1990, c. O.18, as amended, authorizes the Council of a municipality to enact by-laws to designate real property including all buildings and structures thereon, to be of cultural heritage value or interest;

AND WHEREAS the Council of the Corporation of the City of Cambridge has caused to be served upon the owner of the property at 8 Crescent Place, Cambridge, and upon the Ontario Heritage Trust, a Notice of Intention to Designate the property and has caused such Notice to be published in a newspaper having general circulation in the municipality;

AND FURTHER WHEREAS no notice of objection to the proposed designation has been served on the Clerk of the municipality.

NOW THEREFORE BE IT RESOLVED THAT the Corporation of the City of Cambridge enacts as follows:

1. **THAT** the property located at 8 Crescent Place, Cambridge, and legally described in Schedule "A" attached hereto, is hereby designated as being of cultural heritage value or interest under Part IV of the *Ontario Heritage Act*. The designation is limited to the exterior of the property, and no elements of the interior are included in this designation.
2. **AND THAT** the reasons for designation including a description of the cultural heritage value or interest of the property and a description of its heritage attributes, are set out in Schedule "B" attached hereto and forming part of the By-law.
3. **AND FURTHER THAT** the City of Cambridge is hereby authorized to serve a copy of this by-law to the owner of the property and the Ontario Heritage Trust and to cause notice of this by-law to be published in a newspaper having general circulation in the City of Cambridge.
4. **AND FINALLY THAT** it is Acknowledged and Directed that the City Solicitor, or their designate, be authorized to register electronically any and all documents in connection with this transaction.

PASSED AND ENACTED this 24th day of February 2026.

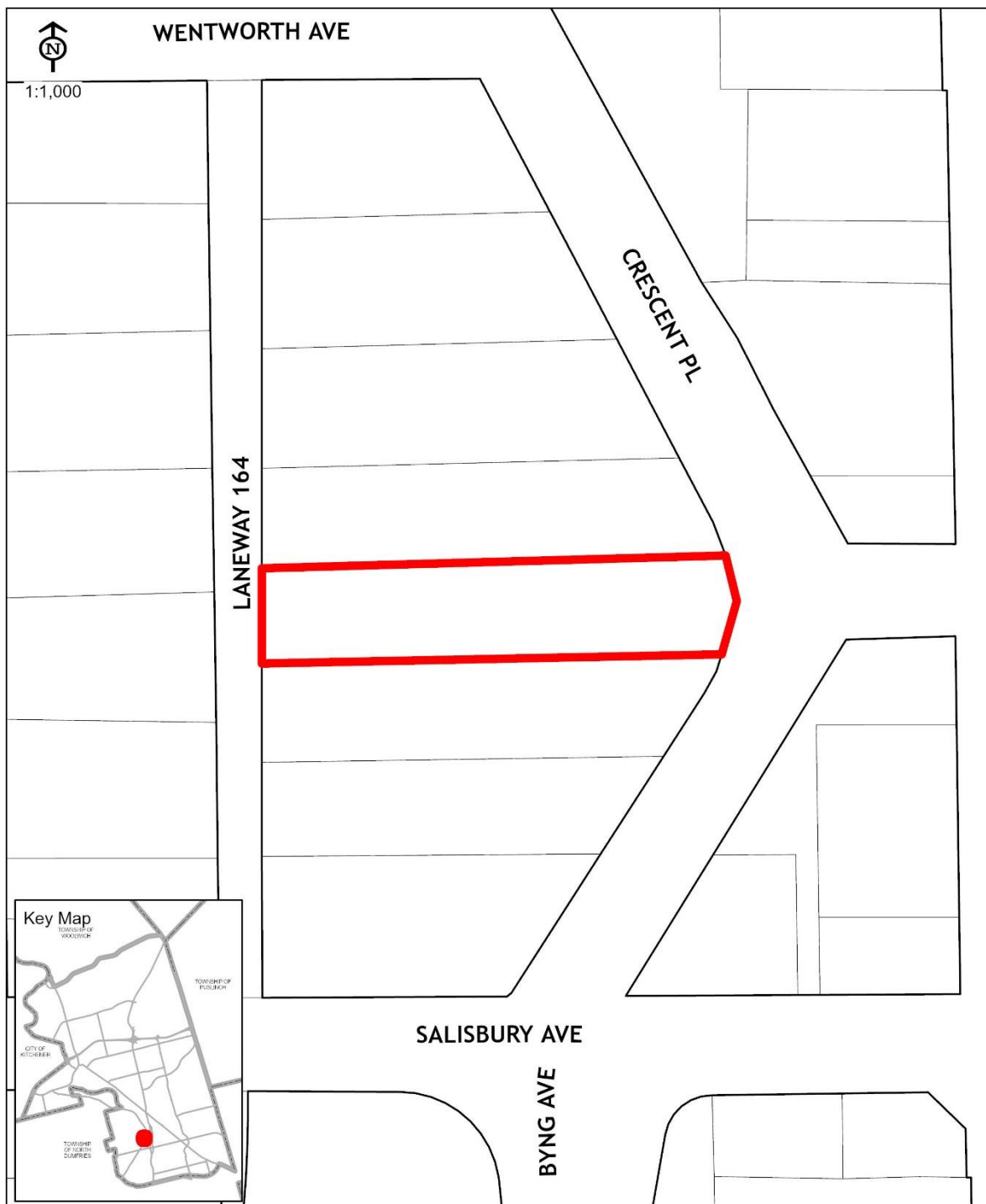
MAYOR

CLERK

SCHEDULE "A"
TO BY-LAW 26-015
of the
CORPORATION OF THE CITY OF CAMBRIDGE

Legal Description of Property

PT LT 4-5 BLK F PL 473 CAMBRIDGE AS IN WS641438; S/T EXECUTION 98-02363, IF ENFORCEABLE; CAMBRIDGE.



Legal Description:
PLAN 473 PT LOT 4 PT LOT
5;IN BLOCK F

PIN: 038050114
City of Cambridge

8 CRESCENT PL

SCHEDULE "B"
TO BY-LAW 26-015
of the
CORPORATION OF THE CITY OF CAMBRIDGE

Statement of Cultural Heritage Value or Interest

Constructed circa 1910, 8 Crescent Place is a representative example of Edwardian residential architecture in Galt. The two-and-a-half storey red-brick dwelling is distinguished by its symmetrical massing and a distinctive tower-like frontispiece that overlooks Queen's Square. Character-defining elements include rounded-arch sash windows, dormers, a gable roof with pediment, a substantial brick chimney, and a covered porch supported by columns with capitals. The property demonstrates the Edwardian values of solidity and classical balance, while the frontispiece provides a unique architectural variation.

The property is associated with William and Mary Hunter, proprietors of Hunter's Bakery, one of Galt's largest bakeries in the early 20th century. Later, members of the Hunter family became active in the local automobile trade, reflecting Galt's economic modernization. The property is thus linked to the Hunter family's entrepreneurial contributions in both food production and automotive commerce.

The property defines and maintains the historic character of Crescent Place and Queen's Square. Its prominent hilltop siting makes it a landmark visible from the civic square and the Main Street Bridge. Historic accounts of the 1930 cenotaph dedication reference "hilltop houses on the crescent," confirming the property's long-standing visual and symbolic role in the civic landscape.

Description of Heritage Attributes

The cultural heritage value of 8 Crescent Place is expressed in the following attributes:

- The two-and-a-half storey Edwardian form and massing
- The red-brick exterior walls and masonry chimney
- The distinctive tower-like frontispiece, including its pediment and vertical emphasis
- The arrangement of rounded-arch sash windows, including dormers
- The covered front porch with classical columns and capitals
- The gable roof profile with dormers

Dated at Cambridge this 24th day of February 2026.