



Cambridge Neighbourhood Organizations

Building thriving neighbourhoods.

One connection at a time.

Municipal support to Neighbourhoods

Report to Council February 3, 2026



Cambridge Neighbourhood Organizations



Presentation Highlights

Part 1: Cambridge Neighbourhood

Community Development Model

Part 2: Social Infrastructure

Part 3: Fiscal Stewardship

Part 4: People, Place Prosperity

Part 5: Conclusion & Questions

What is the Neighbourhood Community Development Model?

Collaborating with the Community

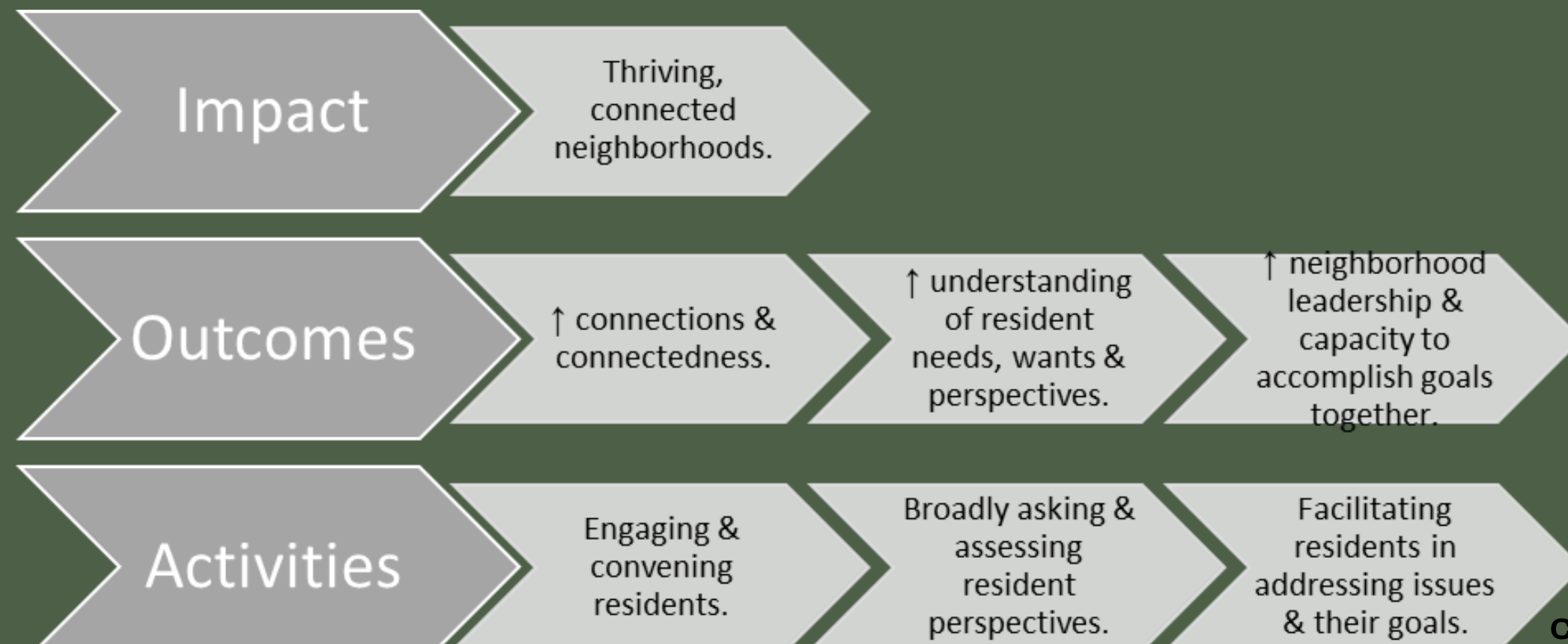
- We engage with community members to assist them in recognizing the needs within their neighbourhoods.
- Residents play an active role in shaping the programs and services available in their area.
- Neighbourhood associations focus on fostering connections among individuals, the centre, and community resources of surrounding residents.
- This model is distinct to Cambridge, providing benefits to the entire Cambridge community

CD Model

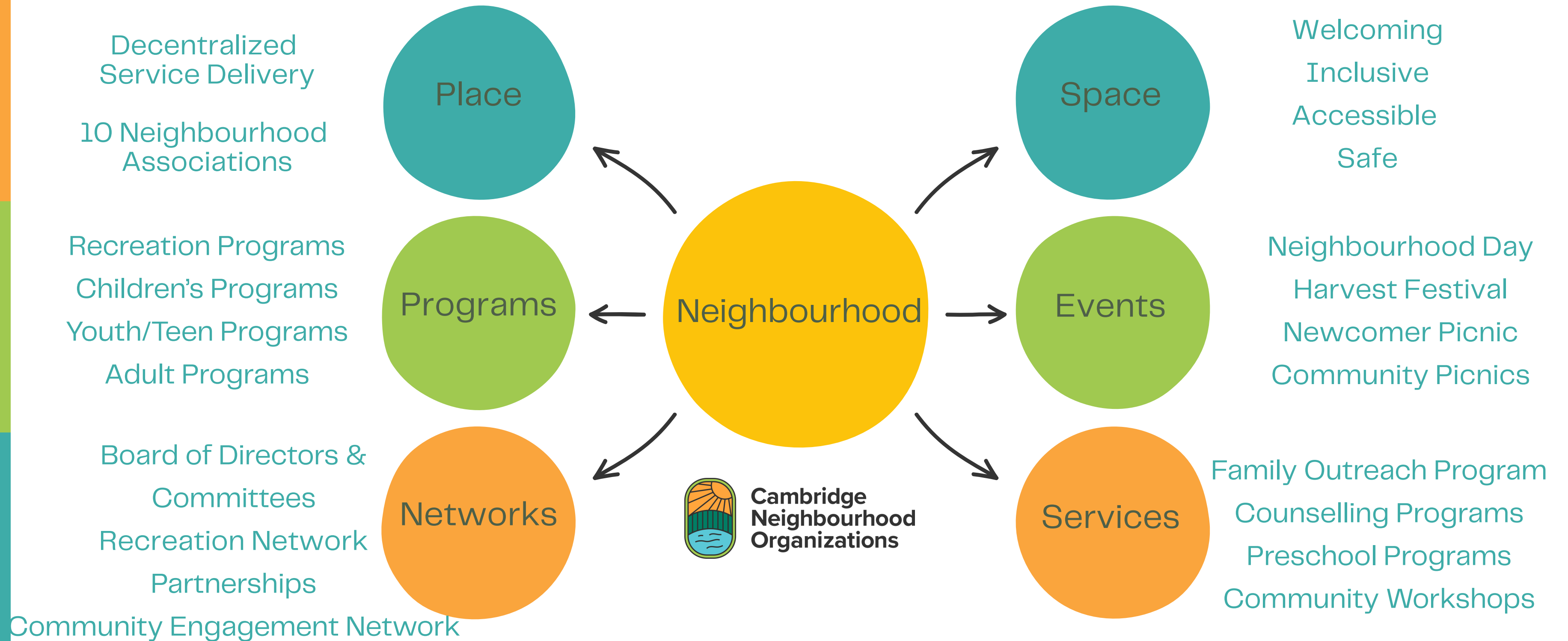
We amplify neighbourhood voices and community development through collaborative efforts in Cambridge.

Our goals include:

- Gaining insight into residents' needs and desires
- Reducing isolation and fostering connections
- Sharing resources for genuine grassroots development.



Social Infrastructure



People Place Prosperity



1. Engagement as demonstrated through volunteerism

Building Connections

increase trust and connection between residents, leading to civic engagement



2. Recreation Statistics

Recreation stats and the positive outcomes

Employment opportunities, especially local youth

- youth leadership development



3. Story Telling

What can the CD model / Social Infrastructure do?

Together we support 1,125 volunteers giving 37,357.5 hours to our Neighbourhoods.

Volunteer Statistics	ANCC	FCC	GCCC	HVNA	Kinbridge	Langs	PHCG	SNA	TOTAL
# of Volunteers	63.00	225.00	67.00	103.00	365.00	185.00	52.00	65.00	1,125.00
# of Hours volunteered	3,392.00	6,216.00	3,317.00	3,524.00	9,008.00	7,412.00	2,080.50	2,408.00	37,357.50

Volunteer Contributions in 2024

- A total of 1,125 volunteers dedicated 37,357 hours throughout the neighbourhoods in 2024.
- This in-kind service, calculated at Region of Waterloo's Living Wage, is valued at \$859,211.

Proudly affiliated with Volunteer Canada.

Together we welcomed 122,688 visits to our Neighbourhood Centres

Visits to Centre	ANCC	FCC	GCCC	HVNA	Kinbridge	Langs	PHCG	SNA	TOTAL
Registered Recreation	8,680	9,248	7,070	7,760	8,407	6,214	2,926	527	50,832
Drop-In Recreation	1,443	6,903	4,358	1,760	7,657	11,705	479	855	35,160
Events Attendance	710	2,912	930	4,200	6,560	2,462	826	556	19,156
Summer Camp	2,175	3,821	2,155	1,624	3,600	1,499	676	1,990	17,540
Total Visits	13,008	22,884	14,513	15,344	26,224	21,880	4,907	3,928	122,688

Neighbourhoods dedicated 3915 hours of our facilities to outside community agencies

Annual City Funding demonstrates to other partners and grantors that:

Investing in Neighbourhoods is an investment in people

GOOD STEWARDSHIP OF FUNDS

TRUSTWORTHY

FISCALLY RESPONSIBLE

ESTABLISHED ORGANIZATIONS

The City's investment in the Neighbourhoods is matched four fold through grants, fee for service and community contributions

2025 Financial Data	ANCC	FCC	GCCC	HVNA	Kinbridge	Langs	Grow	PHCG	SNA	TOTAL
Total Budget	\$368,130.00	\$660,440.00	\$640,368.00	\$370,000.00	\$2,001,856.00	\$359,962.00	\$355,376.00	\$316,640.00	\$310,000.00	\$5,382,772.00
City Funding	\$125,580.00	\$125,580.00	\$122,247.00	\$125,580.00	\$251,160.00	\$125,580.00	\$125,580.00	\$121,947.00	\$125,580.00	\$1,248,834.00
Leveraged dollars	\$242,550.00	\$534,860.00	\$518,121.00	\$244,420.00	\$1,750,696.00	\$234,382.00	\$229,796.00	\$194,693.00	\$184,420.00	\$4,133,938.00

Total Leveraged Funds, \$4,133,938

These figures are strictly financial and do not account for any in-kind contributions.

The benefits extend to the entire City of Cambridge.

PEOPLE



“Being involved in my community has helped me grow so much as a leader. I’m so grateful I’ve had the opportunity to be a participant, volunteer and now a staff member”

Aaliyah P.

One powerful example of community development involves a participant who began their journey attending youth programs, then stepped up as a volunteer and later as a Leader in Training (LIT). Aaliyah’s commitment and leadership potential eventually led to a part time Peer Worker role, where she now helps others find the same sense of belonging and purpose.

In 2024, Aaliyah won the City of Cambridge HIGH FIVE Champion award which highlights her commitment to healthy child development and ensuring children experience quality, recreation programming. Her journey reflects the heart of community development through empowering individuals to grow, lead, and uplift those around her.

PLACE



“Alison Neighbourhood is a place where no matter who you are, you are embraced for all of who you are, and I’m honoured to be a part of it”

–Rose, Volunteer



Alison Neighbourhood
community centre

A Home Away From Home

One participant has been attending our programs for many years. As a participant, she was quiet, reserved, and nervous about attending programs. With time, she became more comfortable expressing her feelings, especially as she built strong relationships with the leaders. She started calling Alison Neighbourhood her “second home”.

Recently, she became a volunteer for our programs. She is now a kind, warm, and eager helper. She builds strong relationships with the participants– especially the shy, reserved, and nervous ones. She dedicates much of her free time to our organization because she knows what Alison Neighbourhood means to her, and in her own words, “wants to help give that feeling to the next group of kids”

PROSPERITY



“Youth leadership is a a group that has helped me build confidence in talking to new people and opportunities I would have done on my own”



Youth Leadership

The Youth Leadership program was created in response to the wants and needs expressed by our community — especially our youth. We heard from young people who were eager to gain experience but were too young to access traditional employment opportunities. Many were struggling to find babysitting jobs or other ways to earn money, so we developed a program that provides both meaningful experiences and an honorarium.

Through this program, youth worked collaboratively to plan and deliver community events, while also building valuable life skills such as budgeting and employment readiness. To celebrate their achievements, we concluded the year with a trip to Ottawa — a first-time experience for many participants and an incredible opportunity for learning and connection.



Andrea is a neighbour,
a Mom and an
advocate for
Greenway!



Welcome Desk Volunteer

**Andrea joined the Welcome Desk
Volunteer Team in 2016.**

**She was looking for an opportunity
to share her skills and find belonging.**

**Andrea is a friendly face that greets
our visitors at Greenway!**

Girls Leadership

SNA's Girls Leadership program was developed to engage youth in the neighbourhood and strengthen their leadership skills. A key focus of the program is fostering healthy friendships and relationships, encouraging participants to reflect on what these look like and how to build them.

Through activities such as resume building, community projects, and volunteer preparation, participants learn the importance of contributing to and supporting their community. They have organized initiatives like a pet food drive and community clean-up, and have taken part in enriching experiences such as rock climbing, bowling, and attending a Toronto FC women's soccer game.

Overall, the Girls Leadership program provides an empowering space for youth to grow their confidence, build meaningful connections, and develop into strong, active members of the community.



“My favourite part was making new friends. I learned how to talk more to others and how to help someone in need”

–Evelyn, Program Participant



Skittles and Formula 1



Community Safety,
Life time, or
Connecting Youth





**Where community
leads, change
follows.**



Community Builders

Kinbridge Community Association is a strategic leader in Cambridge, putting community first through a grassroots, action-oriented approach. We work alongside residents, especially youth, to turn lived experience into meaningful neighbourhood change.

A strong example of this is Churchill Basketball, a youth-led initiative developed by Natu, Jasmin, Salar, Landon, Saif, Rabia, Teena, Abdullah, and Gurleen. Recognizing the importance of safe, welcoming outdoor recreation, the group identified the need to renovate the Churchill outdoor basketball court—an asset used by local schools and the wider community.

With support from Kinbridge, the youth developed a clear, sequenced plan that included:

- Building community connections and partnerships
- Engaging contractors and assessing site needs
- Developing a phased renovation plan
- Leading fundraising efforts to support the project

This initiative demonstrates Kinbridge's role as a city-wide community advocate—supporting residents to lead change, strengthening neighbourhood assets, and improving spaces that benefit the broader Cambridge community beyond our program walls.



‘So much more than
than a recreational
program for kids’ ~
Guardian of Kinder
Kids



Hespeler Village
Neighbourhood Association

HVNA's Kinder Kids

Kinder Kids has served as the primary service program for HVNA, allowing us to connect with young families in the neighbourhood. This connection extends far beyond the program room. The relationships built among families are the cornerstone of our commitment to delivering this high-quality program. Our Kinder Kids have become campers, LITs and eventually staff.



Cambridge Neighbourhood Organizations

Thank You!

Questions?

Contact Us!

Alison Neighbourhood Community Centre

127 Eglin Street North I 519.620.1867

ancc@alisonneighbourhood.org I www.alisonneighbourhood.org

Blair Road Neighbourhood Association

info@blairroad.org

www.blairroad.org

Fiddlesticks Community Centre

71 Cowan Boulevard I 519.621.4040 I info@fiddlesticks.ca

www.fiddlesticks.ca

Greenway Chaplin Community Centre

116 Rouse Avenue I 519.623.4220 I info@greenwaychaplin.com

www.greenwaychaplin.com

Hespeler Village Neighbourhood Association

640 Ellis Road I 519.240.3567 I info@hvna.ca

www.hvna.ca

Kinbridge Community Association

200 Christopher Drive I 125 Champlain Blvd #8 I 241 Southwood Dr #1

519.624.3855 I info@kinbridge.ca

www.kinbridge.ca

Langs

1145 Concession Road I 519.653.1470 I info@langs.org

www.langs.org

Preston Heights Community Group

350 Linden Drive I 2269293260 I phcginformation@gmail.com

www.prestonheights.ca

Silverheights Neighbourhood Association

15 Baldwin Drive I 519.249.1200 I

www.silverheightsneighbourhood.com