

LANDMARK HOMES 130 GUELPH AVENUE

Official Plan Amendment

Zoning Bylaw Amendment

2025 002197 000 00 OZ



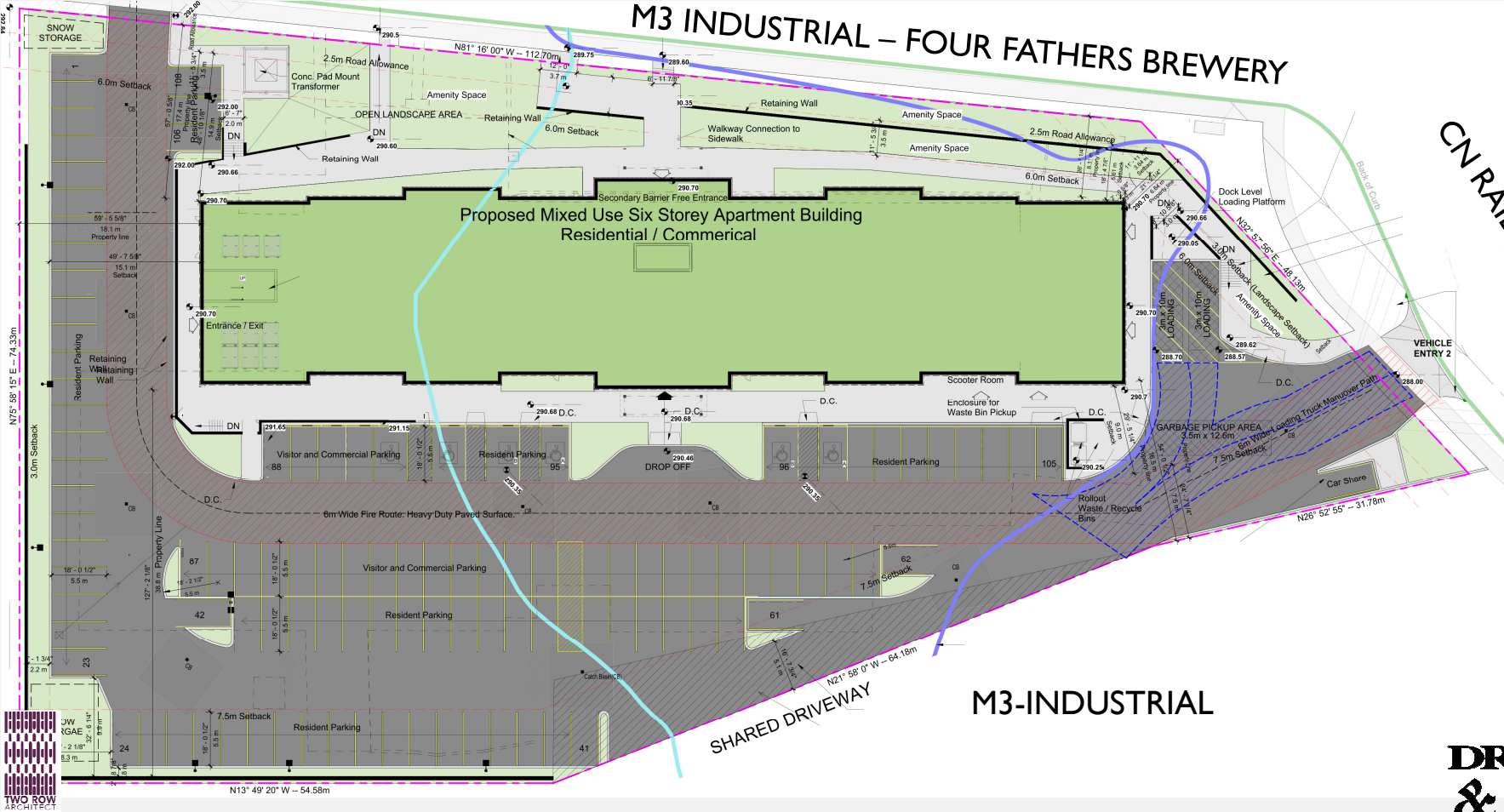
Landmark Homes Ltd.

Jacqueline Hannemann MCIP, RPP
(519) 623-1340, 4739

DSH Planning Consultants Ltd.
(519) 745-3540

**DRYDEN
& SMITH
HEAD**
Planning Consultants Ltd.

CONCEPT PLAN

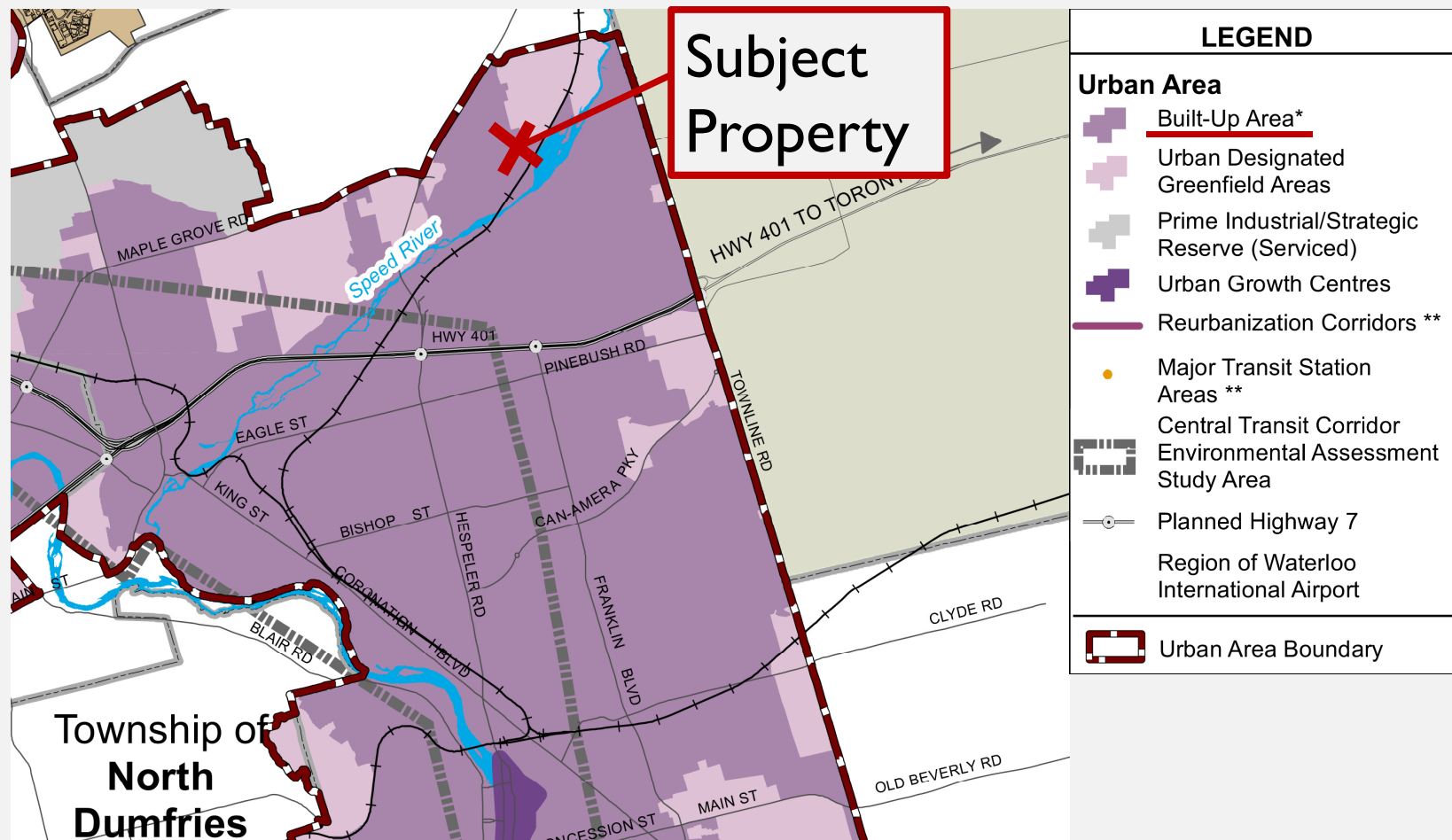


PROPOSAL

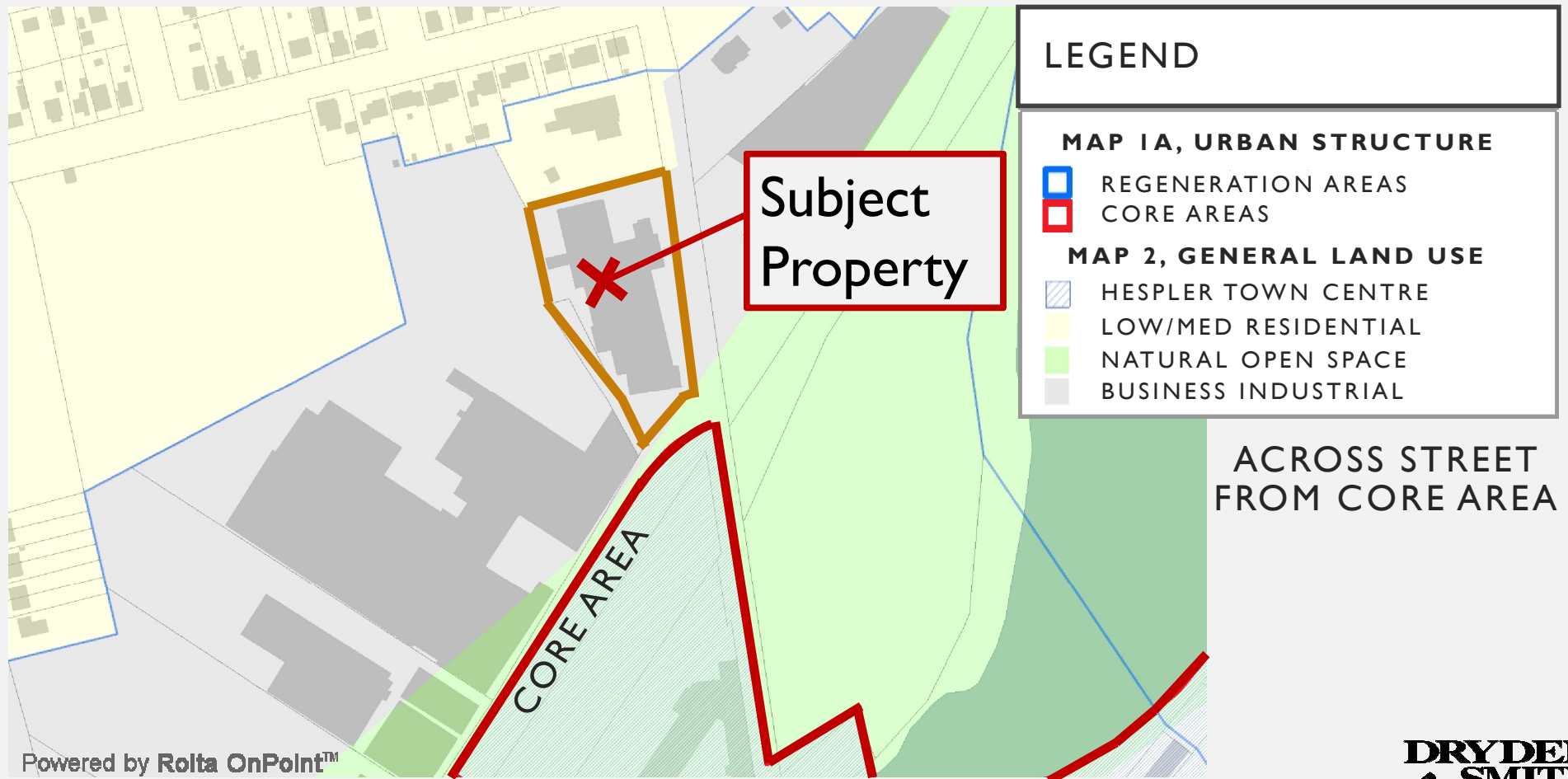
- 6 storey, 112 unit, 100% affordable housing complex with mixed commercial uses
- Zoning Bylaw Amendment from M3, to RM3/C1
- Official Plan Amendment, redesignate from Business Industrial, to High Density Residential/Site Specific Neighbourhood Commercial



REGION OFFICIAL PLAN (MAP 3A)

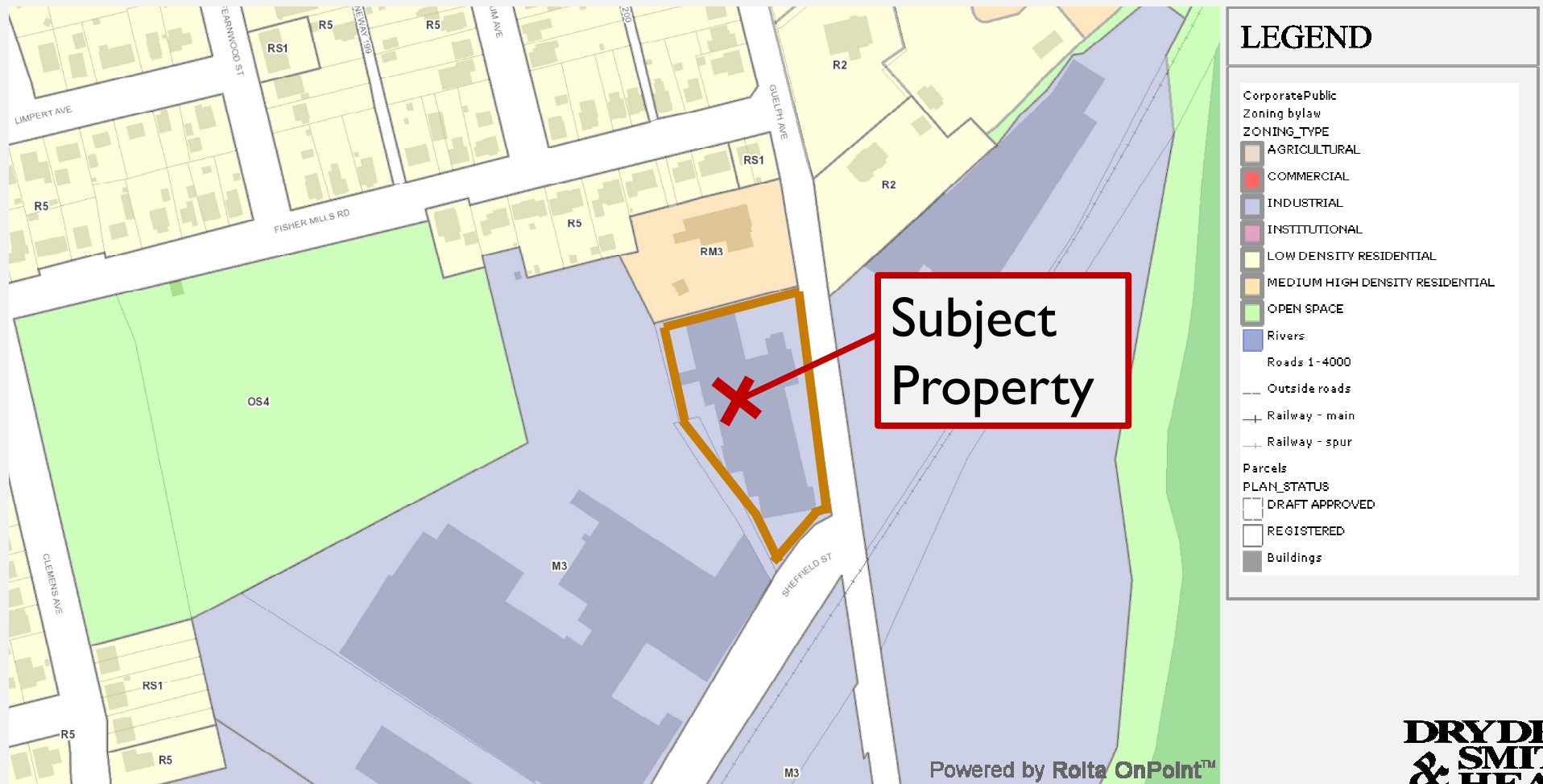


CAMBRIDGE OFFICIAL PLAN



Powered by Rolta OnPoint™

CAMBRIDGE ZONING BYLAW



STUDIES

- Environmental Site Assessment and Remedial Action Plan
- Traffic Impact and Parking Study
- Heritage Impact Assessment
- Landscape Plans
- Shadow Study
- Pedestrian Wind Assessment
- Noise and Vibration Feasibility Study
- Functional Servicing Report

