

TERMS OF REFERENCE

Invitation for Public Art Proposal for the Cambridge Recreation Complex, 655 Wesley Blvd., Cambridge, ON.

You and two other artists are being invited to submit a proposal to create a work of original public art to be included in the development of the [new Cambridge Recreation Complex](#). This building and surrounding area will form an exciting new community hub in the south end of the City. Information about the project is contained herein.

Public Art Mission and Definition of Public Art

The City of Cambridge believes that public art makes a significant positive contribution to the urban landscape, and quality of life. A healthy and creative city will support art and culture and benefit from the enhancements and contribution to the city's identity that public art provides. Cambridge also believes that public art should be accessible to all.

This suspended art must follow the specifications listed in Appendix A. detailed drawing includes:

- 13M x 9M x 12M x 4.5M
- Maximum weight to be hung from roof structure above 450 kg total load allowance, maximum point load 225kg
- 9.15M floor-to-ceiling height (to lower lobby level)
- 3.5M from ceiling to bottom of artwork

Furthermore, the art must:

- be original, and display a high quality of design and technical skill in the execution
- be engaging to the public
- be permanent, durable, low maintenance, resistant to light exposure, safe and vandal-proof
- may involve aesthetic, historic or commemorative objects
- this piece will be suspended from the ceiling

*All materials proposed and/or used must be Canadian and operating impacts will be considered as part of the selection criteria

Timing of installation

- Building construction completion is anticipated Summer 2026; public art installation is expected to be completed Spring/Summer 2026, final installation date to be determined and coordinated with building construction schedule.
- The artist shall coordinate installation with the City's Project Manager and the General Contractor responsible for building construction.

Commission Process

The Arts and Culture Advisory Committee (via the Public Art Sub-Committee) is responsible to Council for overseeing the process of commissioning the work, including the terms of reference; the distribution of information and requirements; and acting as a liaison with city staff and the selection jury. The jury is under no obligation to select any of the submissions, and all decisions are subject to City Council approval up to and including commissioning and installing the work

The jury will be composed of 6 members: three well-established, nationally recognized experts and three local representatives. The jurors are knowledgeable, highly qualified, and widely respected within their fields.

The jury will include,

- An art critic/professor
- A curator of site-specific installations
- A curator of a gallery
- A local indigenous artist

And, by public application,

- A young adult from Waterloo Region; post-secondary undergraduate, graduate or recently graduated within two years, and having studied fine arts or related arts courses
- And a qualified member of the public (Cambridge citizen at large)

Stage One will consist of an invitation to three qualified artists to develop their proposals

Stage Two will consist of a jury that will review all three proposals and then make a recommendation to the Public Art subcommittee, which will then ask the Arts & Culture Advisory committed to make a recommendation to Council to approve the final selection.

Budget

The allowance available to the artist will be up to a maximum of \$175,000, inclusive of all expenses. The allowance for the artwork must include any expenses incurred by the

artist to produce and install the artwork, such as, but not limited to:

- artist and/or artist team fee
- artist travel expenses
- all consulting fees, including structural engineering costs if required
- design
- materials
- fabrication
- HST
- legal costs, if required
- insurance* (liability/damage insurance; standard practice)
- WSIB
- special features, if any (e.g. lighting)
- installation costs, including travel and delivery
- clean up costs

* The artist must carry the appropriate insurance from the signing of the contract until completion when the artwork is signed over to The City of Cambridge. The City of Cambridge requires \$2 million liability/damage insurance.

Selection Criteria

- Ability to work collaboratively with others, including City of Cambridge staff
- an understanding of the community
- a proven track record in public art commissions
- originality, imagination, and artistic merit
- experience working with the materials being proposed
- materials must be Canadian
- appropriateness of the concept and design to the site
- appropriateness of the materials specific to the specified public environment
- feasibility in implementation
- the ability to adhere to the overall schedule
- the ability to install in the timeframe requested
- compliance with the competition requirements

*Operating impacts will be considered as part of the selection criteria.

Selection Process

A two-stage process will be conducted as follows:

- Stage One:

An invitation call to 3 artists. With specifications and expected timeline

- **Stage Two:**
The 3 artists will be paid an honorarium of \$500 towards producing their proposals.
The three proposals will be shared with the public.
The jury will consider the three proposals and may request optional presentations and/or interviews with some or all of the candidates.
The jury will make the final selection and recommendations to the Arts & Culture Advisory Committee (via the Public Art Subcommittee).
The Committee will present their recommendation to City Council.
Subject to City Council's approval, the artist will be notified, contract signed, the art will be commissioned and installed.

Submission Requirements

Stage One

Please include in your submission:

1. An artwork statement about this proposal. Describe the general design concept and rationale for an artwork installation of this type, include simple sketches.
2. Provide a curriculum vitae (c.v.), including public art commissions (maximum of 2 pages including reviews/articles).
3. Submit a proposed site-specific design. This is not the final detailed submission, but a clear indication of the concept.
4. Provide 3-5 JPEG images of past work. Images must be clearly titled and numbered.
 - Please do not send any materials other than requested for Stage One;
 - Please do not submit 3-D models, original work, catalogues or oversized renderings mounted on boards.

Submissions not meeting the above requirements may not be considered



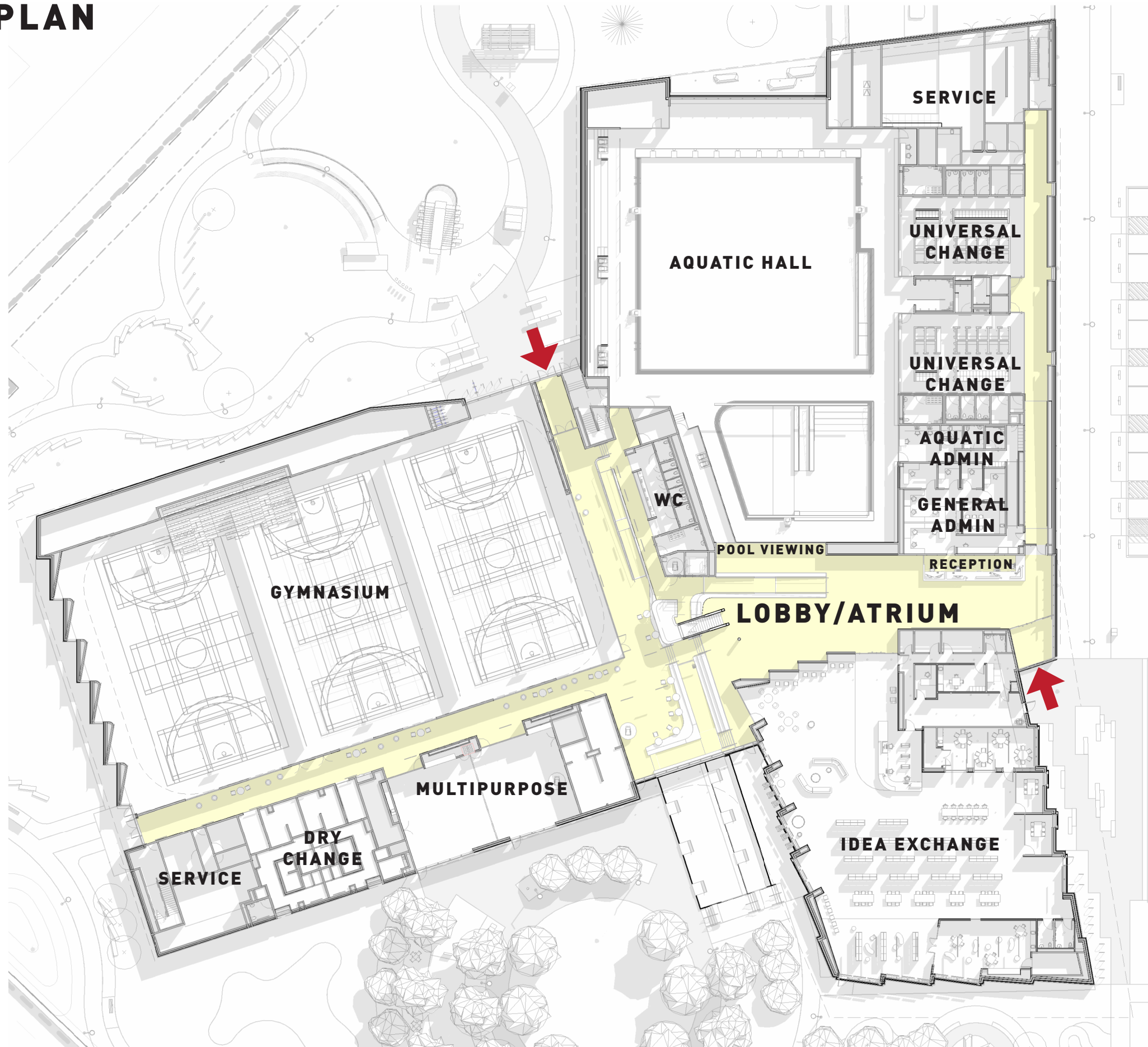
CAMBRIDGE RECREATION COMPLEX AND LIBRARY

2024-06-13

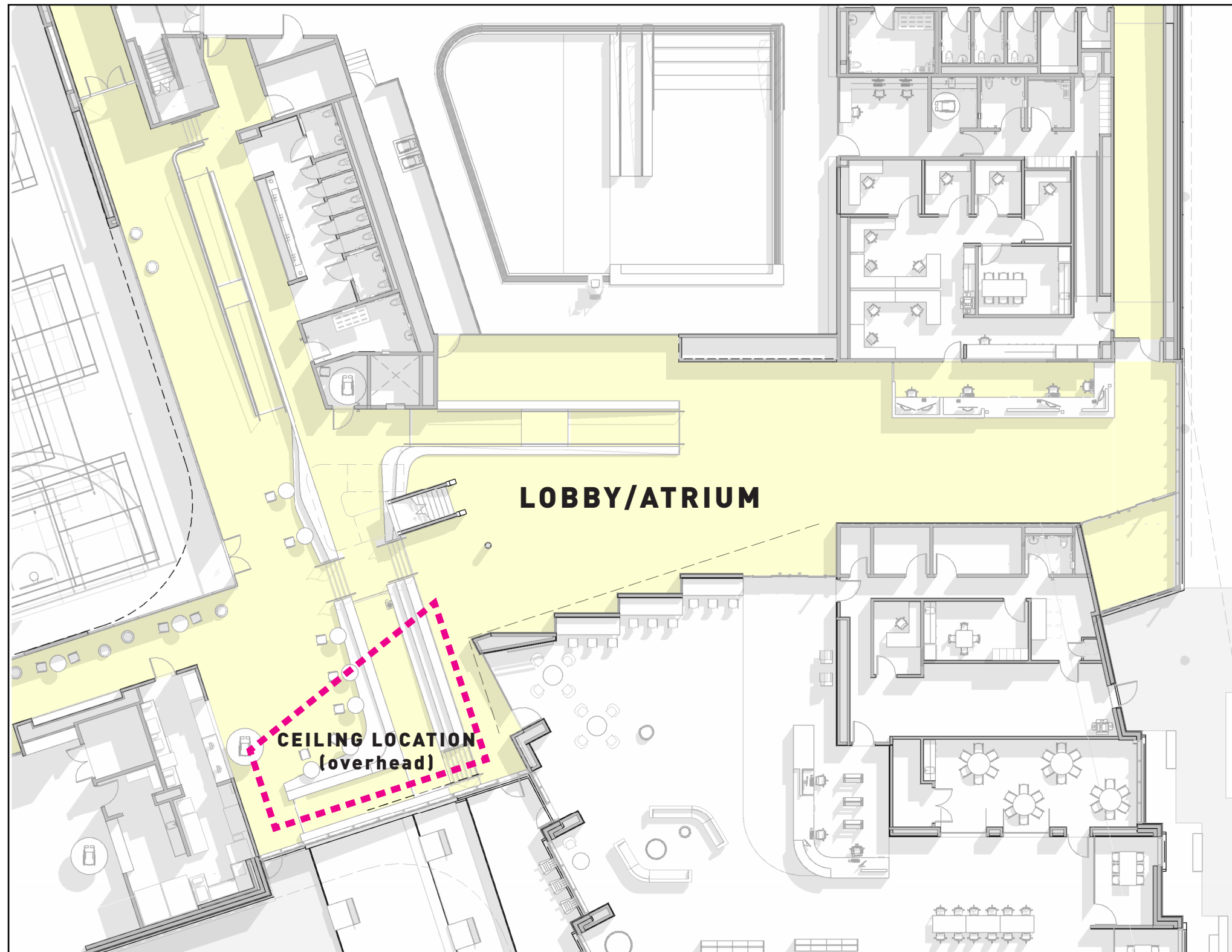
MJMA
ARCHITECTURE & DESIGN

PROPOSED PUBLIC ART LOCATION

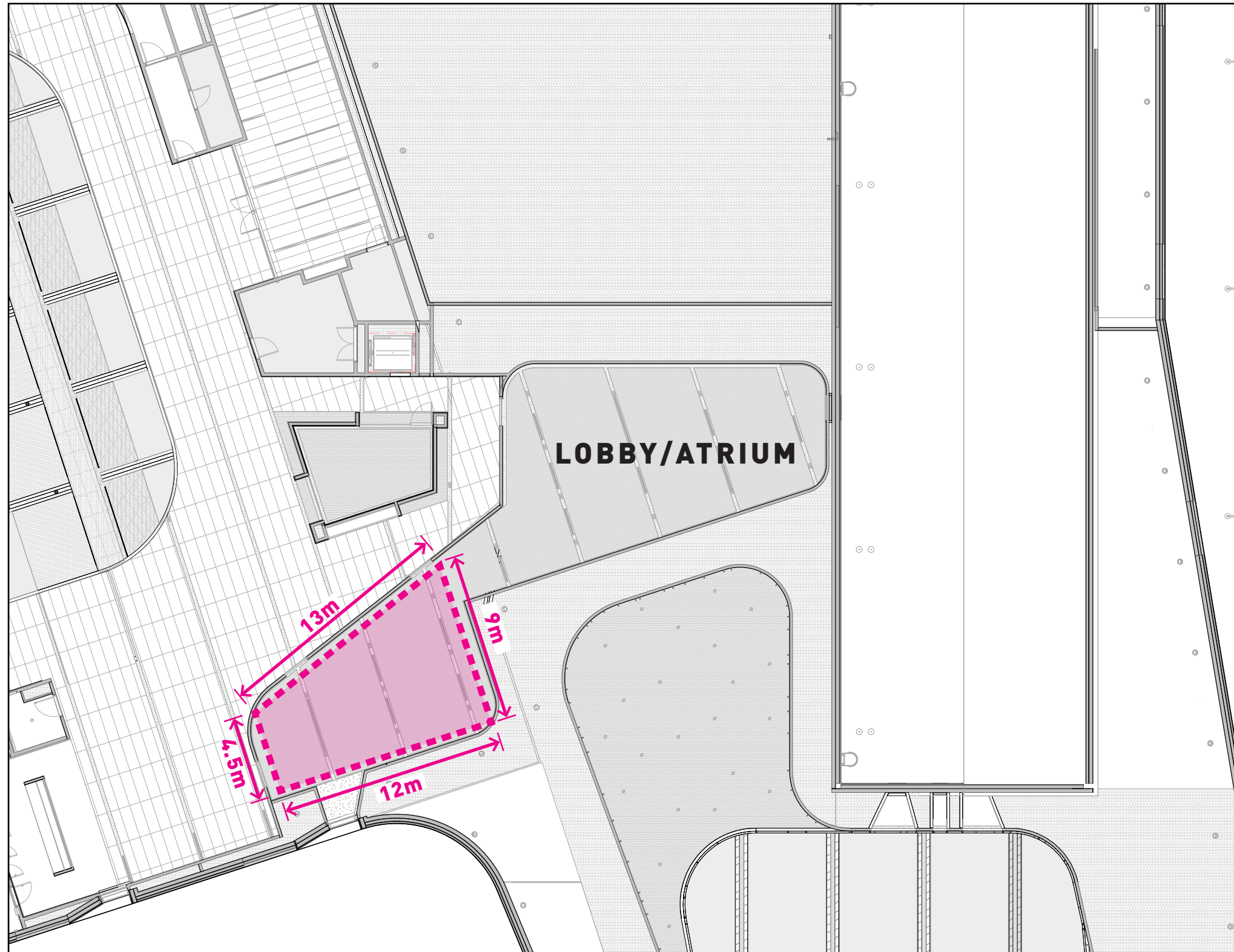
LEVEL 1 KEY PLAN



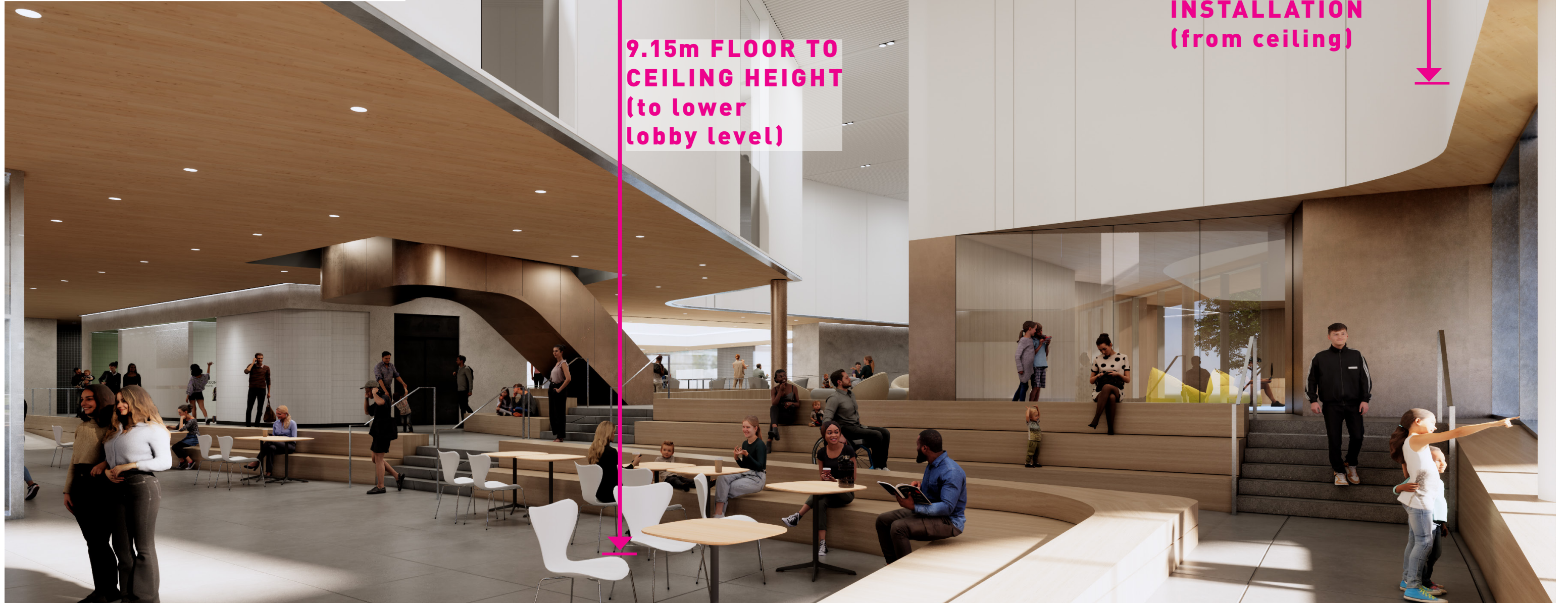
LOBBY/TRIUM PLAN - PROPOSED ART LOCATIONS



CEILING PLAN - PROPOSED HANGING ART LOCATION



CEILING LOCATION

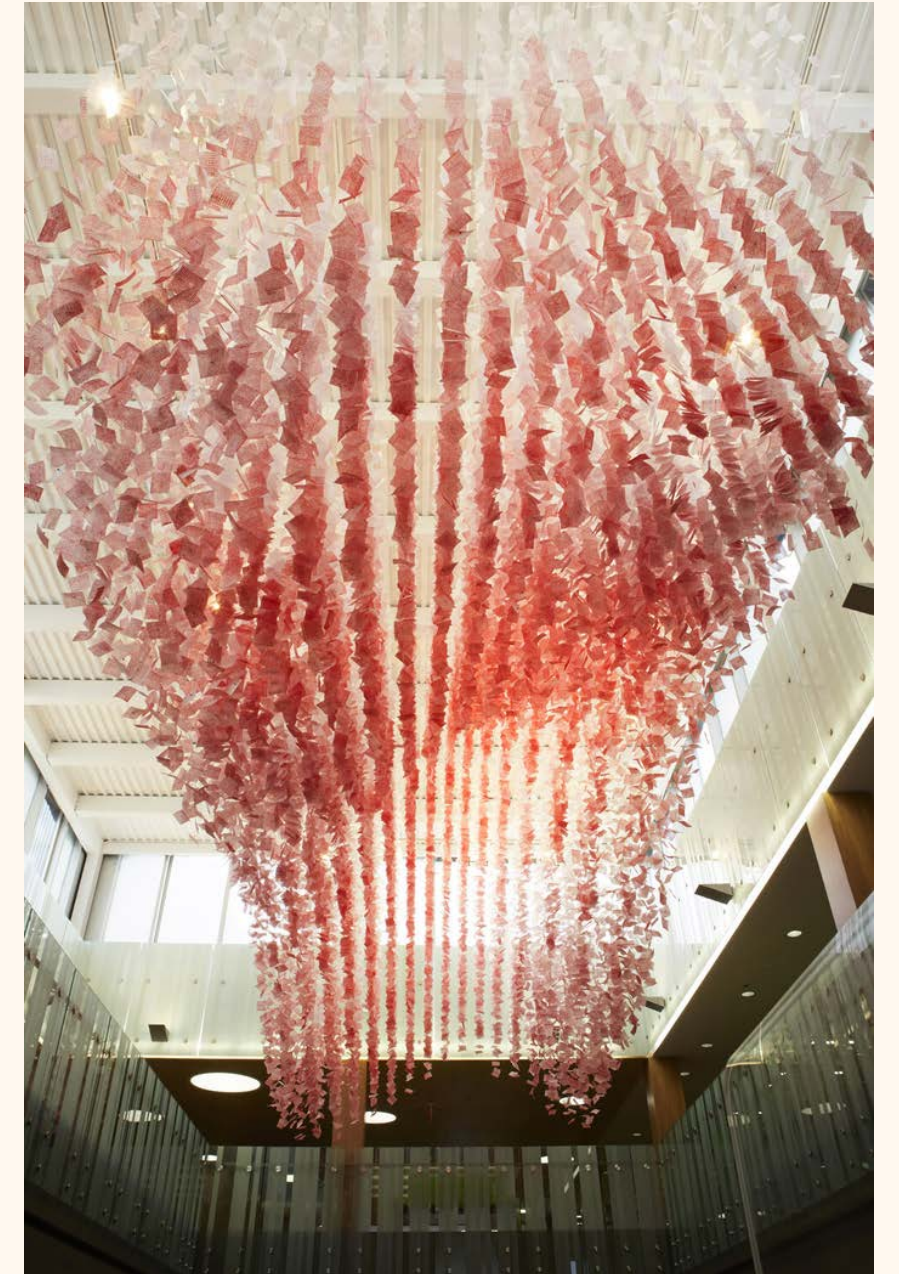


MAXIMUM WEIGHT TO BE HUNG FROM ROOF STRUCTURE ABOVE:
- 450kg total load allowance
- maximum point load of 225kg

9.15m FLOOR TO CEILING HEIGHT (to lower lobby level)

3.5m MAXIMUM DEPTH OF INSTALLATION (from ceiling)

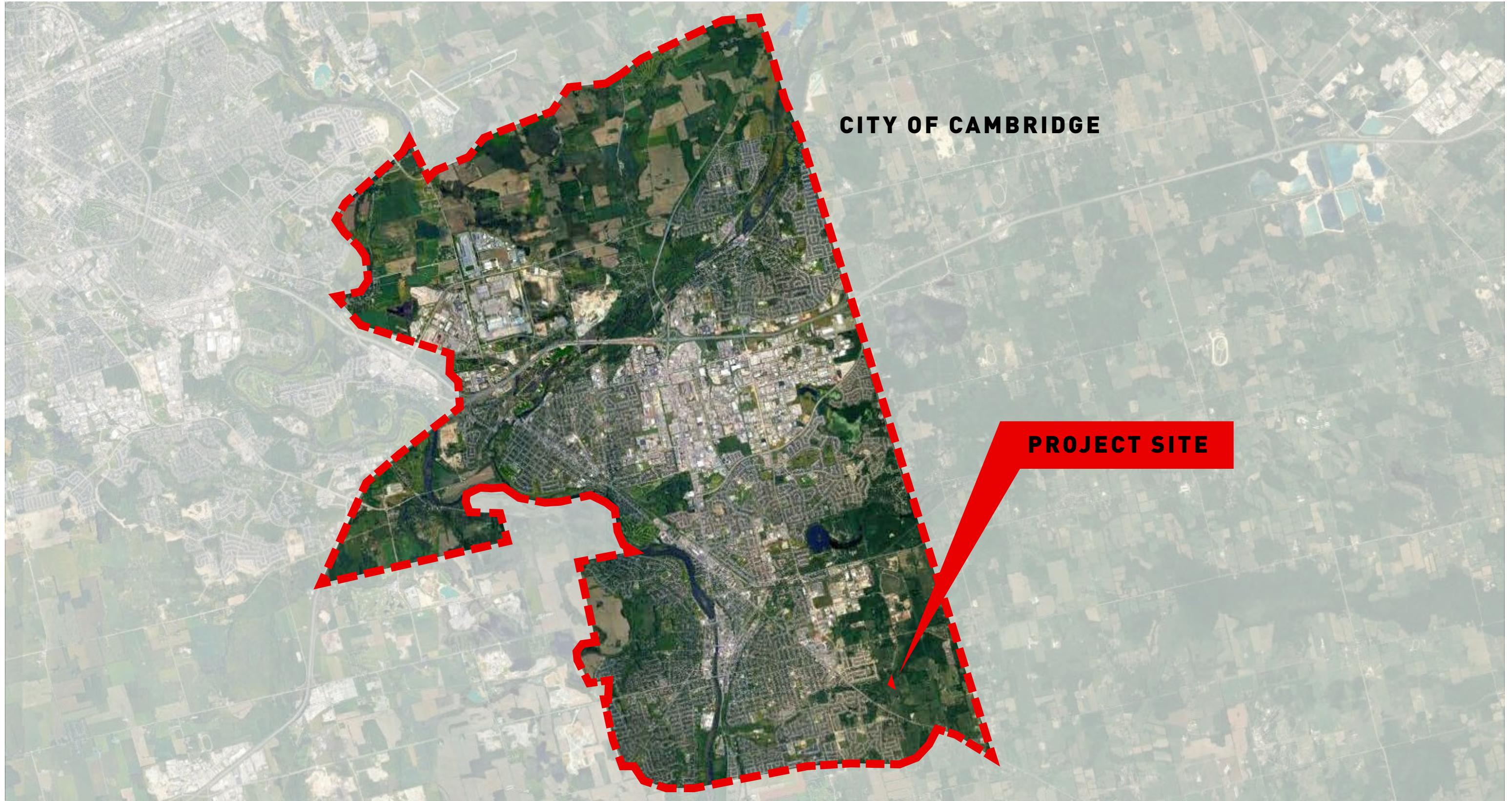
CEILING INSTALLATION PRECEDENT - KITCHENER PUBLIC LIBRARY



MOSS & LAM: KITCHENER PUBLIC LIBRARY - "FLUX" - AN ART INSTALLATION CONSISTING OF A SWEEPING, UNDULATING ARC OF THOUSANDS OF SMALL SHEETS OF PAPER FLOATING TOWARDS THE CEILING.

THANK YOU!

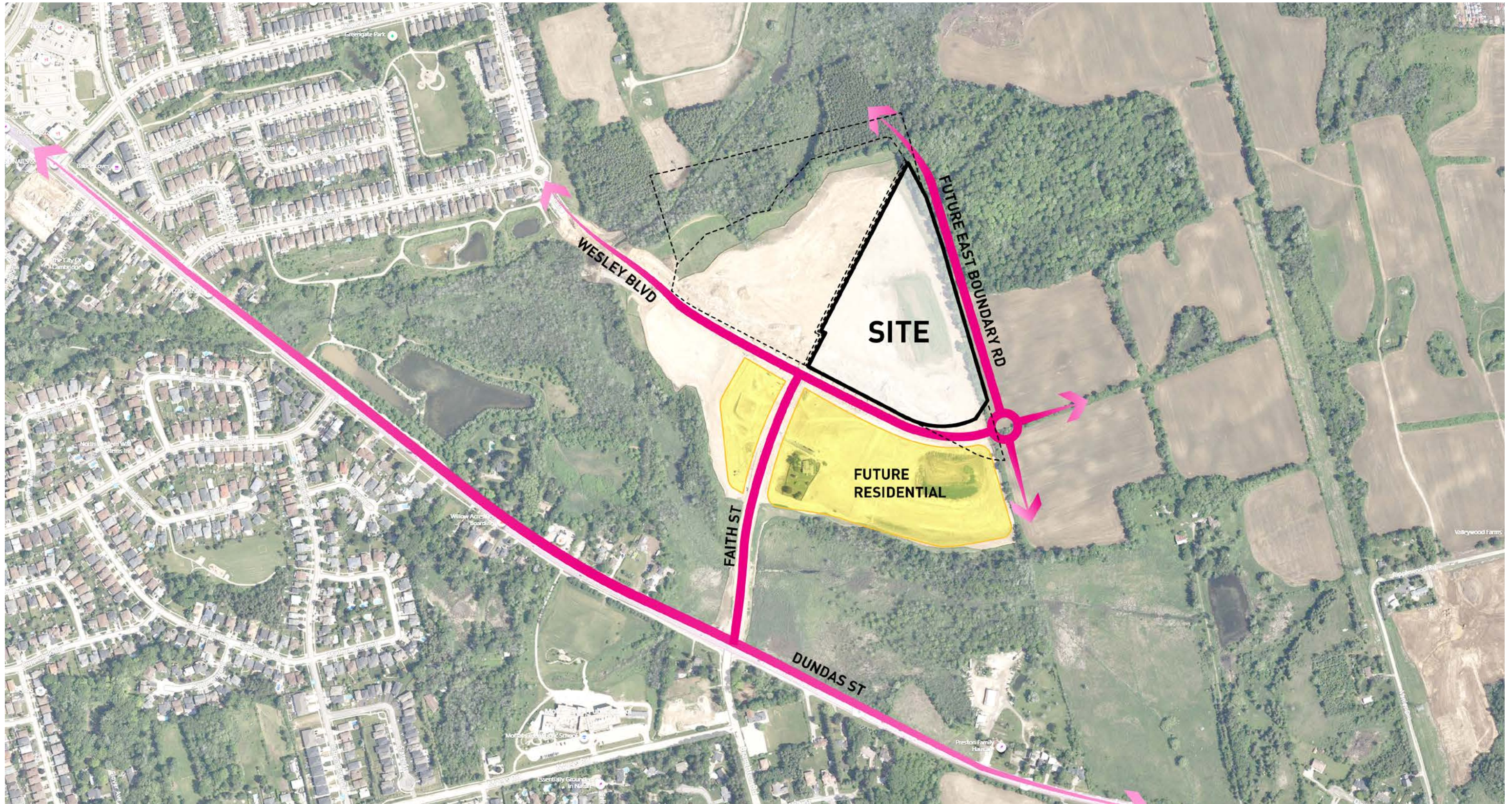
SITE



CITY OF CAMBRIDGE

PROJECT SITE

SITE




OVERALL SITEPLAN / MUP * CRCL

- 1 Parking lot (382 spots)
- 2 Parking entrance plaza
- 3 Reading garden
- 4 Covered porch
- 5 Central green + water feature
- 6 Trail head
- 7 Wild play + fitness park
- 8 Playground entrance
- 9 Picnic grove
- 10 Maintenance area
- 11 Pickleball courts (4)
- 12 Basketball court
- 13 Adventure trail
- 14 Multi-use trail
- 15 Trail head
- 16 Trail head



PARIS GALT MORAINE

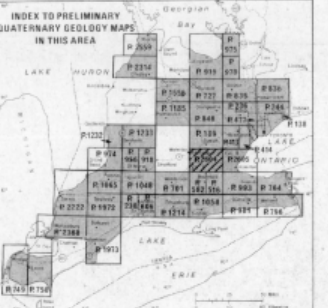



 Ministry of Natural Resources
 Ontario

Hon. Alan W. Pope
 Minister
 Al I. Foster
 Deputy Minister

ONTARIO GEOLOGICAL SURVEY
 MAP P.2604
 GEOLOGICAL SERIES-PRELIMINARY MAP
 QUATERNARY GEOLOGY
CAMBRIDGE AREA
 SOUTHERN ONTARIO
 Scale 1:50 000
 NTS Reference: 40 P/8

Parts of this publication may be quoted if credit is given and the material is properly referenced.
 This map is published with the permission of E.G. Pye, Director, Ontario Geological Survey.

INDEX TO PRELIMINARY QUATERNARY GEOLOGY MAPS IN THIS AREA


LEGEND

PHANEROZOIC
CENOZOIC
QUATERNARY
RECENT

- 17 Lake Ontario deposits: stratified and gravel
- 16 Stream deposits: gravel, sand, silt, and clay
- 15 Peat and muck

PLEISTOCENE
LATE WISCONSINAN

- 14 Alluvial fan gravel
- 13 Beach gravel
- 12 Lacustrine and outwash sand
- 11 Lake deposits: stratified to varved clay, silt, and fine sand
- 10 Halton Till: clay or silt till
- 9 Outcrop complex: bouldery till and bedrock ridges
- 8 Ice-contact sand, kames and eskers
- 7 Outwash gravel
- 6 Ice-contact gravel: kames and eskers
- 5 Wentworth Till: stony, sandy, silt till
- 4 Port Stanley Till: silt to sandy silt till
- 3 Maryhill Till: clayey silt till
- 2 Catfish Creek Till: stony, sandy silt till

PALEOZOIC
ORDOVICIAN AND SILURIAN

- 1 Shale and dolomite

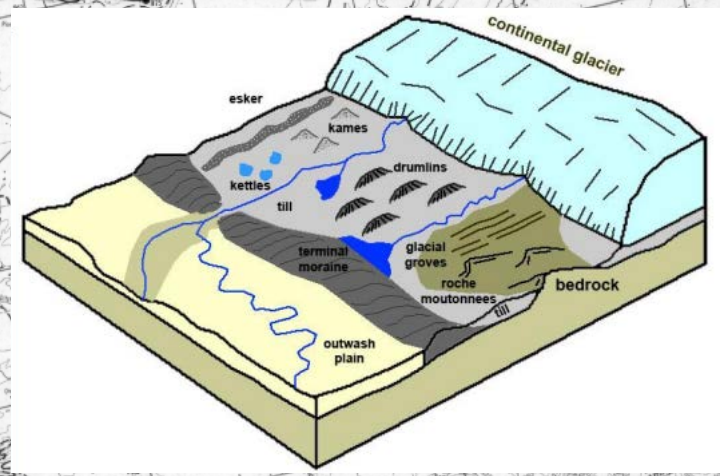
*exposed only in river banks beneath younger till.
 Note: The legend, symbols, and marginal notes are for both the Cambridge and Hamilton map sheets.

SYMBOLS

- Drumlin
- Esker
- Geological boundary, approximate
- Glacial fluting
- Bedrock pressure-release ridge
- Eroded scarp
- Ice-contact face
- Glacial striae
- Trend of moraine crest
- Abandoned shoreline feature
- Hummocky topography
- Shallow lacustrine sediments of Lake Pelee
- Sample site*
- Sand or gravel pit
- Rock quarry

*Sample sites are referred to in OPR 5420.

SOURCES OF INFORMATION

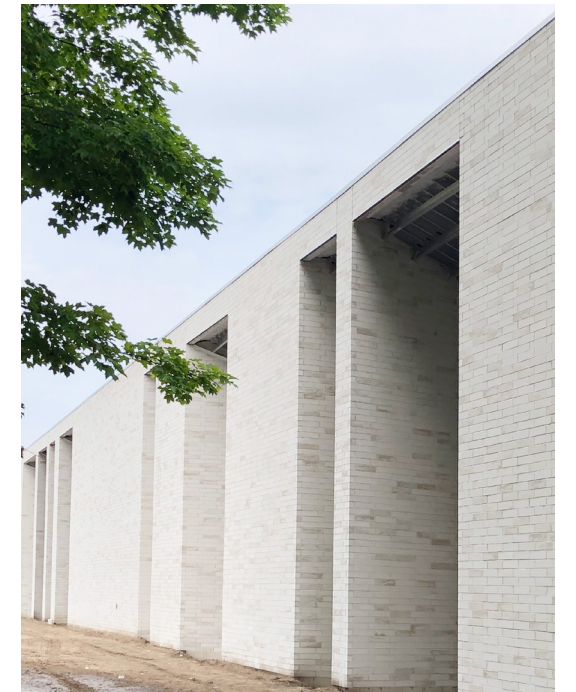






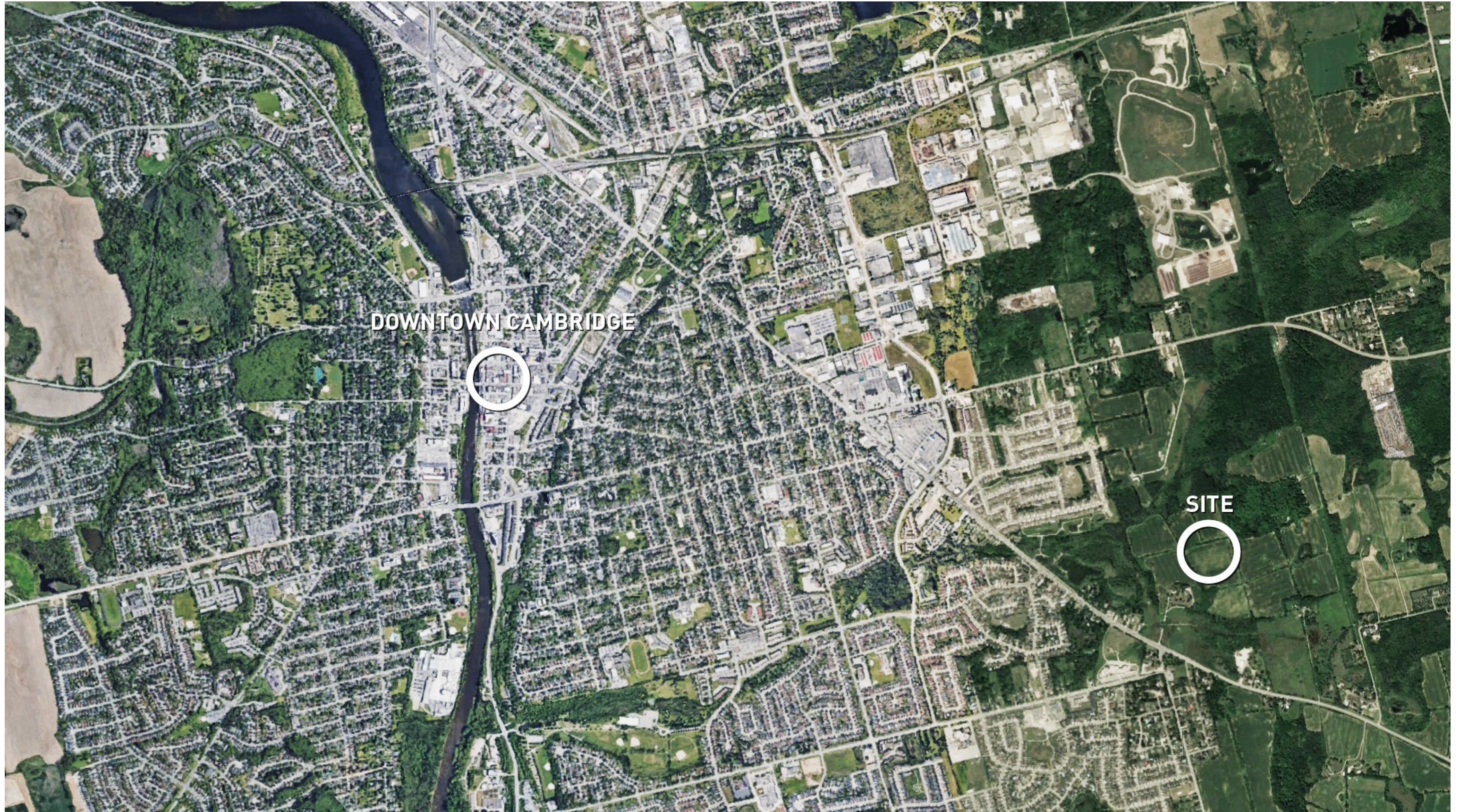
DOWNTOWN CAMBRIDGE

contains a rich history of natural grey stone buildings including City Hall and Idea Exchange (post office) which line the city's public realm



MASONRY FACADE
textural qualities inherent in masonry facades allude to historical
stone buildings in Cambridge

MAP OF CAMBRIDGE



AERIAL VIEW



THE SITE



Rocks



River



Trees & Topography

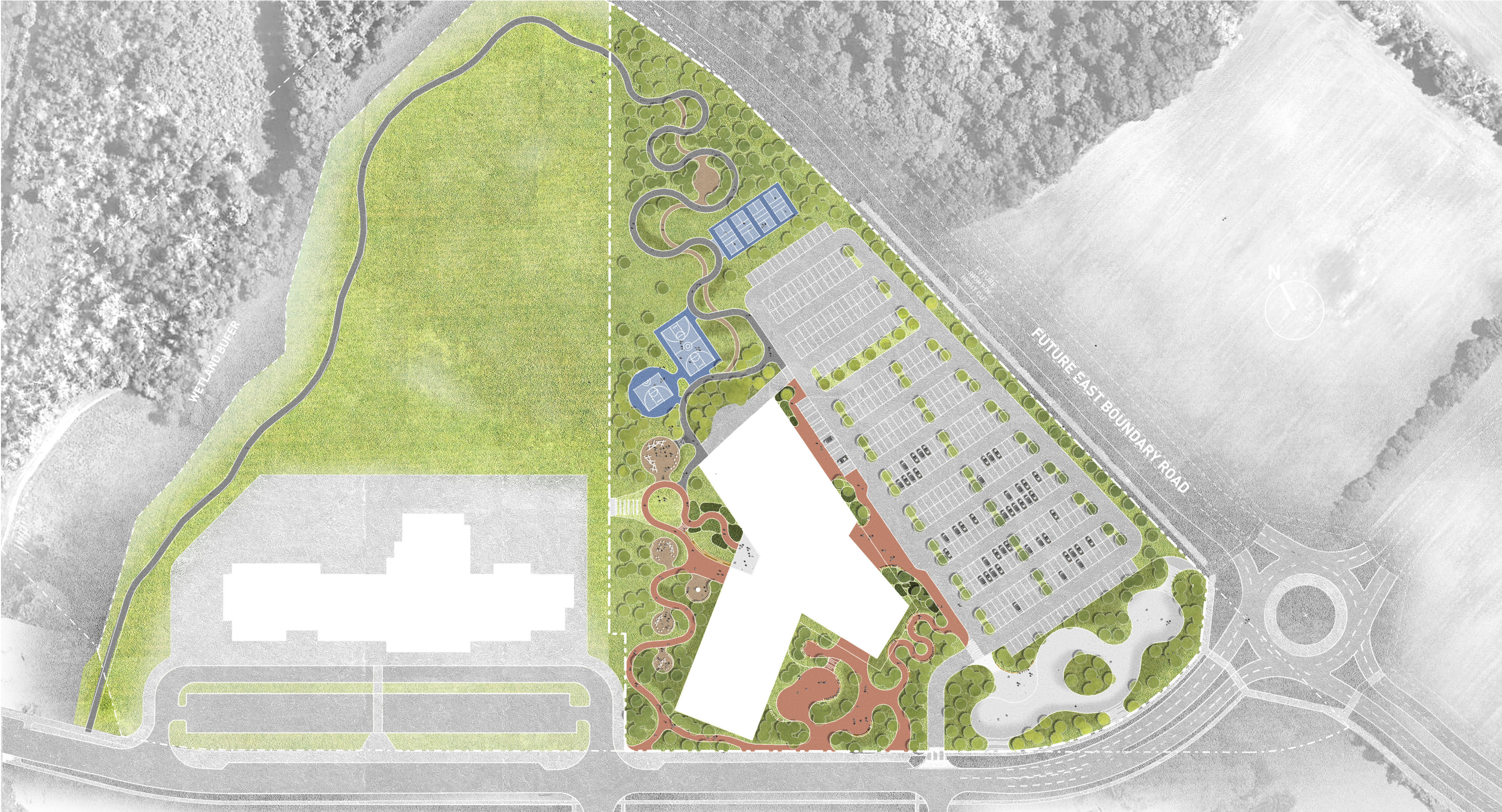
LA PRESENTATION
2022-12-21

DYNAMIC LANDSCAPES
PARIS GALT MORAINE

GRAND RIVER



SITE PLAN - LA PRESENTATION
2022-12-21



NORTHERN PARK ENTRANCE



WESLEY BLVD ENTRANCE



GYM ELEVATION FROM WESLEY BLVD



GYM FACADE FROM SOUTH WEST



COURTYARD



IDEA EXCHANGE

SOUTHERN COURTYARD SPACE LOOKING TOWARDS LIBRARY INTERIOR

