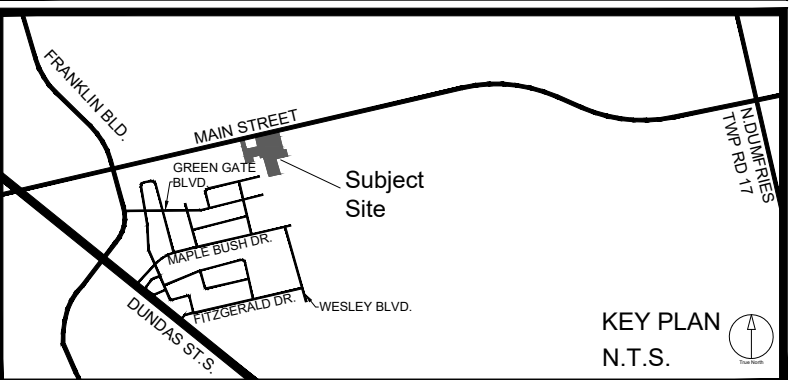


**PROPOSED DRAFT
PLAN OF
SUBDIVISION**

FILE: 30T-20104
"UPPER GREENGATE"
PART OF LOTS 3 AND 4, CONCESSION 10,
(GEOGRAPHIC TOWNSHIP OF NORTH DUMFRIES)
CITY OF CAMBRIDGE
REGIONAL MUNICIPALITY OF WATERLOO
1005, 1045, 1085 and Part of 965 MAIN STREET,
CAMBRIDGE



INFORMATION REQUIRED
UNDER SECTION 51(17) OF THE PLANNING ACT, R.S.O. 1990, C.P. 13 AS AMENDED.
a) AS SHOWN
b) AS SHOWN
c) AS SHOWN
d) AS LISTED BELOW
e) AS SHOWN
f) AS SHOWN
g) AS SHOWN
h) MUNICIPAL WATER
i) MIX SILT TILL/SANDY SILT
j) AS SHOWN
k) MUNICIPAL SANITARY AND STORM SEWERS
l) AS SHOWN

SURVEYOR'S CERTIFICATE
I HEREBY CERTIFY THAT THE BOUNDARIES OF THE SUBJECT LANDS AND THEIR RELATIONSHIP TO THE ADJOINING LANDS HAVE BEEN ACCURATELY AND CORRECTLY SHOWN.
BRIAN CAMPBELL
ONTARIO LAND SURVEYOR
STANTEC GEOMATICS LTD.
DATE: September 17, 2020

OWNER'S CERTIFICATE
I AUTHORIZE IBI GROUP TO PREPARE & SUBMIT THIS PLAN OF SUBDIVISION TO THE REGIONAL MUNICIPALITY OF WATERLOO FOR APPROVAL.
SIGNED: [Signature]
I have the power to bind the corporation
DATE: September 17, 2020
SIGNED: [Signature]
I have the power to bind the corporation
DATE: September 17, 2020

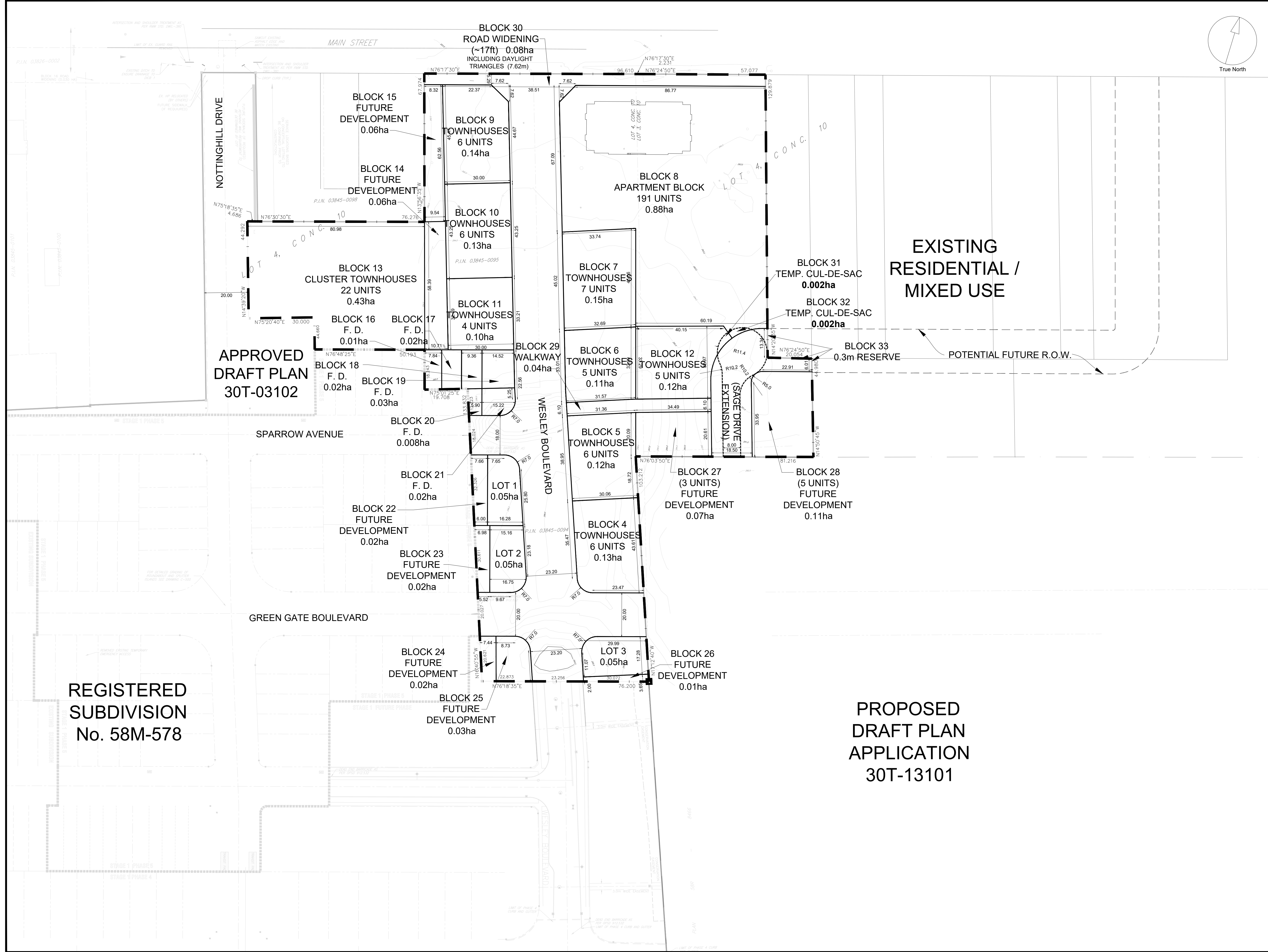
LAND USE SCHEDULE	AREA (ha)	# LOTS / UNITS
LOT 1	0.05	1
LOT 2	0.05	1
LOT 3	0.05	1
BLK. 4	0.13	6
BLK. 5	0.12	6
BLK. 6	0.11	5
BLK. 7	0.15	7
BLK. 8	0.88	191
BLK. 9	0.14	6
BLK. 10	0.13	6
BLK. 11	0.10	4
BLK. 12	0.12	5
BLK. 13	0.43	22
BLK. 14	0.06	-
BLK. 15	0.06	-
BLK. 16	0.01	-
BLK. 17	0.02	-
BLK. 18	0.02	-
BLK. 19	0.03	-
BLK. 20	0.008	-
BLK. 21	0.02	-
BLK. 22	0.02	-
BLK. 23	0.02	-
BLK. 24	0.02	-
BLK. 25	0.03	-
BLK. 26	0.01	-
BLK. 27	0.07	3
BLK. 28	0.11	5
BLK. 29	0.04	-
BLK. 30	0.08	-
BLK. 31	0.002	-
BLK. 32	0.002	-
BLK. 33	0.001	-
ROADS (+/- 530m)	0.88	269
TOTAL	3.97	

DATE	DESCRIPTION	BY
NOV 2019	REMOVAL OF LANDS FROM OWNERSHIP	E.T.
MAY 2020	REMOVAL OF LANDS FROM DRAFT PLAN	E.T.
APR. 2022	STAFF CIRCULATION COMMENT REVISIONS	E.T.
MAR. 2023	REVISIONS FOR FINAL DRAFT PLAN APPROVAL	E.T.
JUL. 2024	REVISION BLK.8 FROM 132 TO 191 UNITS	E.T.

COPYRIGHT
This drawing has been prepared solely for the intended use, and any reproduction or distribution for any purpose other than authorized by IBI Group is forbidden. Written dimensions shall have precedence over scaled dimensions. Contractors shall verify and be responsible for all dimensions and conditions on the job, and IBI Group shall be informed of any variations from the dimensions and conditions shown on the drawing. Shop drawings shall be submitted to IBI Group for general performance before proceeding with fabrication.
IBI Group Professional Services (Canada) Inc.
is a member of the IBI Group of companies.

IBI GROUP
Suite 101 - 410 Albert Street
Waterloo ON N2L 3V3 Canada
Tel: 519-585-2255
ibigroup.com

DATE: AUGUST, 2020
SCALE: 1 : 750 (AS PLOTTED ON 24 x 36 PAPER SIZE)
DRAWN BY: E.T.
FILE NAME: 122926_DP
PROJECT NO.: 122926
DRAWING NO.: DP1



**REGISTERED
SUBDIVISION
No. 58M-578**

**PROPOSED
DRAFT PLAN
APPLICATION
30T-13101**

