

**To:** **COUNCIL**

**Meeting Date:** **11/09/21**

**Subject:** **Gouda Place Playground Zone and 40 km/h Speed Limit**

**Submitted By:** **Kevin De Leebeeck, Director of Engineering**

**Prepared By:** **Jason Leach, Sustainable Transportation Coordinator**

**Report No.:** **21-262(CD)**

**File No.:** **C1101**

---

## Recommendations

THAT Report 21-262(CD) – Gouda Place Playground Zone and 40 km/h Speed Limit be received;

AND THAT a Playground Zone with a 40 km/h speed limit be implemented on Gouda Place from the west end of the street to 114m east thereof;

AND THAT the 40 km/h speed limit be extended easterly to Cheese Factory Road;

AND FURTHER THAT the by-law(s) attached to this report be passed.

---

## Executive Summary

### Purpose

- The purpose of this report is to seek Council approval to proceed with the implementation of a Playground Zone and a 40 km/h speed limit on Gouda Place.

### Key Findings

- Upon review of the playground (Gouda Place Parkette) on Gouda Place, it was found that a Playground Zone is warranted.
- A Playground Zone is designated by Playground Ahead signs and a 40 km/h speed limit.
- The designation of a Playground Area or Zone is determined through a warrant system as per the Transportation Association of Canada (TAC), School and Playground Areas and Zones: Guideline for Application and Implementation.

- The Playground Zone would extend from the west end of Gouda Place to 114m east thereof.
- The remaining section of Gouda Place east to Cheese Factory Road is less than 200m and is also recommended that the 40 km/h speed limit be extended easterly to Cheese Factory Road.

## Financial Implications

- Costs are estimated to be \$1,000 for the required traffic sign revisions and will be funded through the 2021 Transportation Engineering Operating Budget.

---

## Background

Transportation Engineering staff have received requests to lower the speed limit and implement speed management initiatives on Gouda Place. The speed limit on Gouda Place is currently 50 km/h.

---

## Analysis

### Strategic Alignment

PEOPLE To actively engage, inform and create opportunities for people to participate in community building – making Cambridge a better place to live, work, play and learn for all.

Goal #1 - Community Wellbeing

Objective 1.1 Work with partners to create a safe, inclusive and accessible city.

The recommendations of this report are intended to address resident traffic concerns while creating a safe and efficient transportation network for all users.

---

## Comments

Based on an initial review of Gouda Place, it was found that Gouda Place Parkette did not have a Playground Area or a Playground Zone associated with it. Further review indicated that a Playground Zone is warranted in front of Gouda Place Parkette based on the Transportation Association of Canada guidelines. A Playground Zone is defined by Playground Ahead signs and a speed limit reduction to 40 km/h. A Playground Area consists of only Playground Ahead signs.

The Playground Zone would extend from the west end of Gouda Place to 114m east thereof. As the remaining section of Gouda Place east to Cheese Factory Road is less than 200m, it is recommended that the 40 km/h speed limit be extended easterly to Cheese Factory Road (see Appendix A).

Should Council support the recommended speed limit change, the required By-law Amendment has been attached to this report for approval as Appendix B.

Following the implementation of the Playground Zone and 40 km/h speed limit, staff will conduct speed and volume studies to determine if further speed mitigation measures are required based on the Council approved Speed Management Program.

---

## **Existing Policy/By-Law**

The Transportation Association of Canada, School and Playground Areas and Zones: Guideline for Application and Implementation provides guidelines for the implementation of Playground Zones. These guidelines were used for the recommendations of this report.

---

## **Financial Impact**

The Costs are estimated to be \$1,000 for the required traffic sign revisions and will be funded through the 2021 Transportation Engineering Operating Budget.

---

## **Public Input**

All property owners adjacent to Gouda Place were notified regarding the recommendations of this report via a mailed letter on September 15, 2021. No concerns or comments related to the recommendations of this report have been received.

The letter also included all of the relevant information regarding how to access a copy of this report, the date and time of this Special Council meeting and how to submit comments or register as a delegation. This report has also been posted publically as part of the report process.

---

## **Internal/External Consultation**

There was no internal/external consultation undertaken.

---

## **Conclusion**

Based on staff's review and the Transportation Association of Canada's guidelines, it is recommended that a Playground Zone with a 40 km/h speed limit be implemented on Gouda Place from the west end of the street to 114m east thereof and that the 40 km/h speed limit be extended east to Cheese Factory Road (see Appendix A).

This recommendation aligns with City's Strategic Plan by addressing resident concerns while creating a safe, inclusive and accessible City.

---

## Signature

### Division Approval



Reviewed by the CFO

Reviewed by Legal Services

**Name: Kevin De Leebeeck**

**Title: Director of Engineering**

### Departmental Approval



**Name: Hardy Bromberg**

**Title: Deputy City Manager, Community Development**

### City Manager Approval



**Name: David Calder**

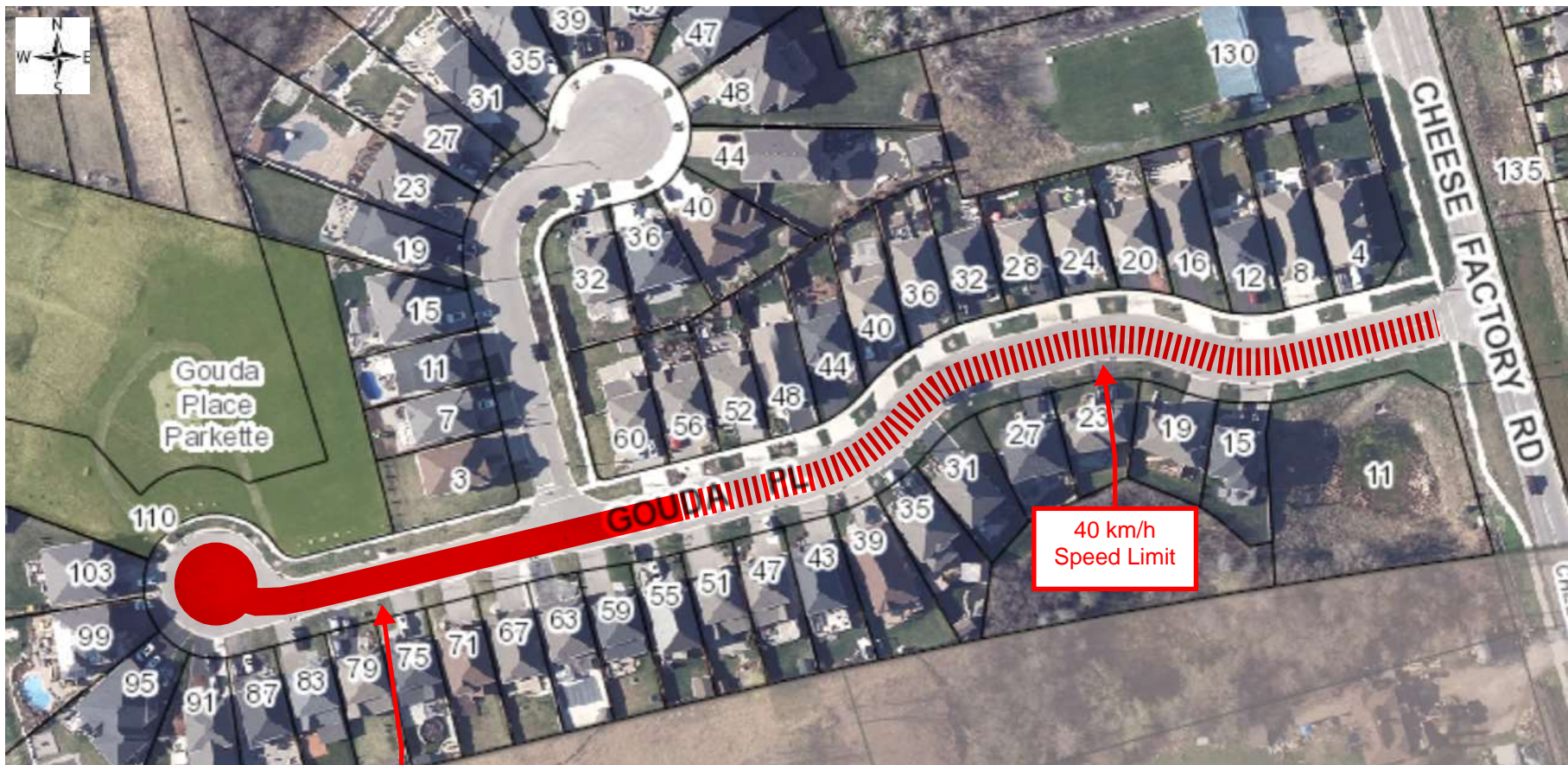
**Title: City Manager**

---

## Attachments

- Appendix A – Playground Zone and 40 km/h Speed Limit
- Appendix B – Traffic & Parking Bylaw Amendment

## Appendix A – Playground Zone and 40 km/h Speed Limit



Playground Zone  
and 40 km/h  
Speed Limit

40 km/h  
Speed Limit



## BY-LAW NO. XXX-XX

of the

## CORPORATION OF THE CITY OF CAMBRIDGE

Being a by-law of the Corporation of the City of Cambridge to amend By-law 187-06 being a By-law for the regulation of Traffic and Parking.

**Gouda Place**

**WHEREAS** the Council of the Corporation of the City of Cambridge passed By-law No. 187-06 on the 18th day of September, 2006.

**AND WHEREAS** the Municipal Act, 2001, S.O. 2001, c.25, Section 11(2), authorizes the passing of by-laws regulating traffic and parking on highways;

**AND WHEREAS** it is deemed expedient to amend By-law No. 187-06.

**NOW THEREFORE BE IT RESOLVED THAT** the Corporation of the City of Cambridge enacts as follows:

1. THAT Schedule 18, "Rates of Speed", Part XIV of By-law No. 187-06 is hereby amended by **adding** the following:

HIGHWAY	FROM	TO	MAXIMUM SPEED
Gouda Place	west end of street	Cheese Factory Road	40 km/h

3. THAT this by-law shall come into full force and effect upon the final passing thereof.

ENACTED AND PASSED THIS 11TH DAY OF NOVEMBER, 2021, A.D.

---

 MAYOR

---

 CLERK